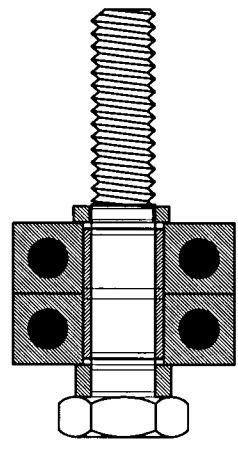
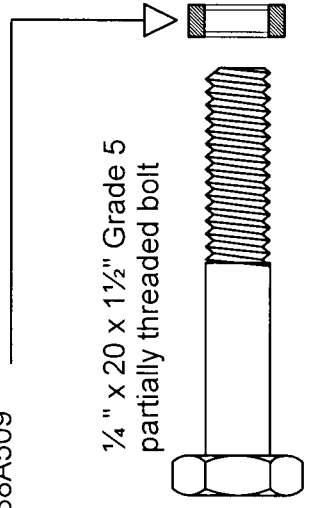
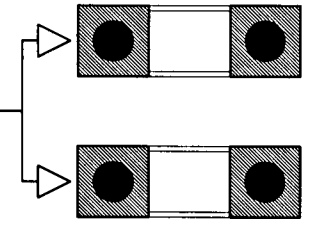


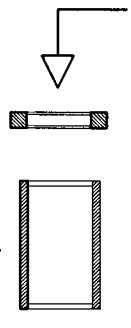
.125" Thick x .25" ID x .375" OD
Steel Shim McMaster-Carr
#3088A509



608-2RS Bearing
8mm x 22mm x 7mm
Bearing Bargains



.25" ID x .3125" OD x .5"
Length Bronze Sleeve
McMaster-Carr 9368T12



.0625" Thick x .25" ID x .375" OD
Steel Shim McMaster-Carr
3088A464

Double Bearing Modification of
Upper & Lower Back-up
Bearing Assembly

Scale = .75

4/19/2008

LDH