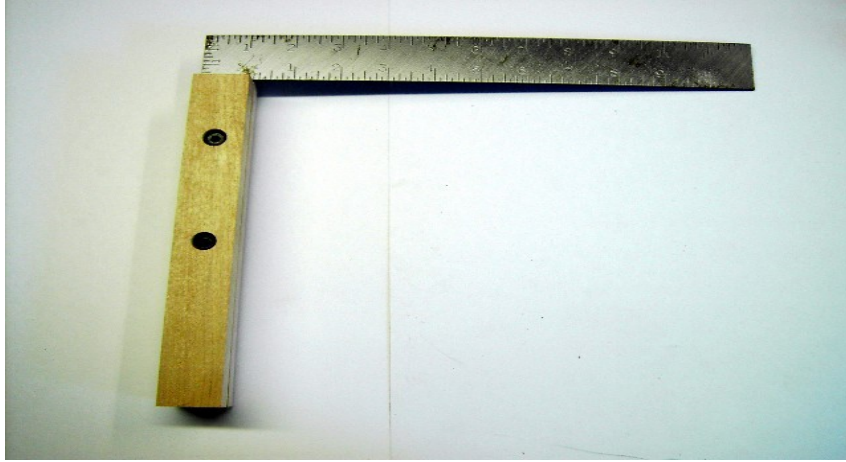


A Square Deal

Do you have an old framing square that isn't? Don't throw it away! Why not turn it into a useful tool?



PUT A HANDLE ON IT

I got this tip from a DVD called “ESSENTIAL WOODWORKING TECHNIQUES” from Woodworkers Guild of America. Framing squares are difficult to use anyway All you have to do is drill a couple of holes in the narrower end of the square a tad larger than the size bolt you are going to use. In my case I used 1/4” bolts and locking nuts, so I drilled 5/16” holes in the square and 1/4” counter sunk holes in the handles. This will give you some adjustment room to square the handle to the remaining blade. Now all you have to do is use a good square, square up the handle to the blade, tighten the bolts and PRESTO!, you now have a very useful new tool in your bag of tricks.