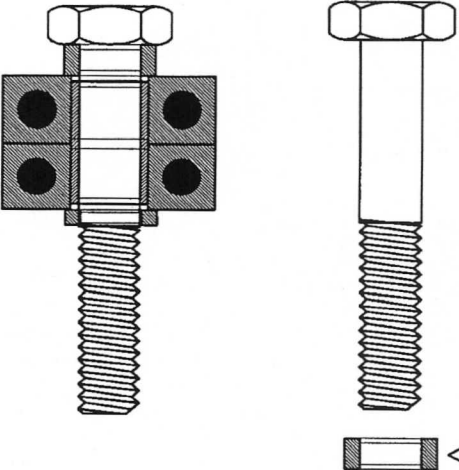


.125" Thick x .25" ID x .375" OD  
Steel Shim McMaster-Carr  
#3088A509

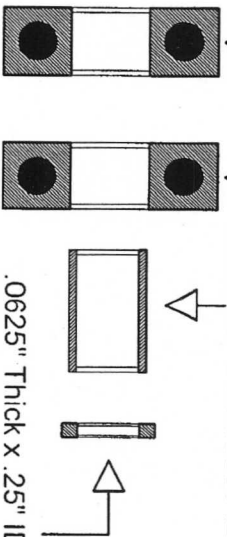
1/4" x 20 x 1 1/2" Grade 5  
partially threaded bolt



608-2RS Bearing  
8mm x 22mm x 7mm  
Bearing Bargains

.25" ID x .3125" OD x .5"  
Length Bronze Sleeve  
McMaster-Carr 9368T12

.0625" Thick x .25" ID x .375" OD  
Steel Shim McMaster-Carr  
3088A464



Double Bearing Modification of  
Upper & Lower Back-up  
Bearing Assembly

Scale = .75

4/19/2008

LDH

.125" Thick x .25" ID x .375" OD  
Steel Shim McMaster-Carr  
#3088A509

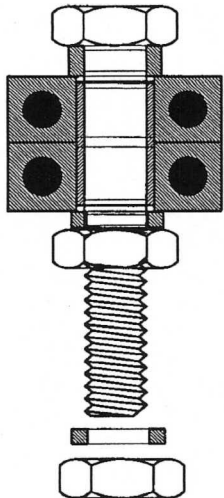
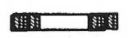
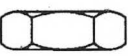
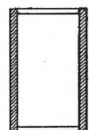
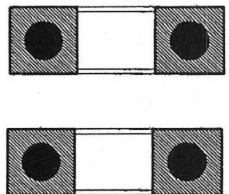
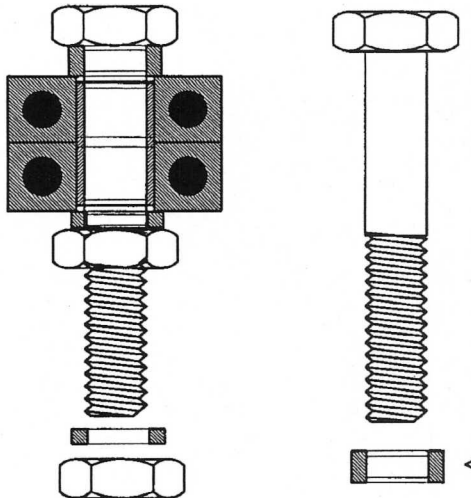
608-2RS Bearing  
8mm x 22mm x 7mm  
Bearing Bargains

.25" ID x .3125" OD x .5" .0625" Thick x .25" ID x .375" OD  
Length Bronze Sleeve Steel Shim McMaster-Carr  
McMaster-Carr 9368T12 3088A464

1/4" x 20 x 1 1/2" Grade 5  
partially threaded bolt

1/4" Lock Washer

1/4" x 20 Nut



Double Bearing Modification  
of Auto-Trak Assembly

Scale = .75

4/19/2008

LDH