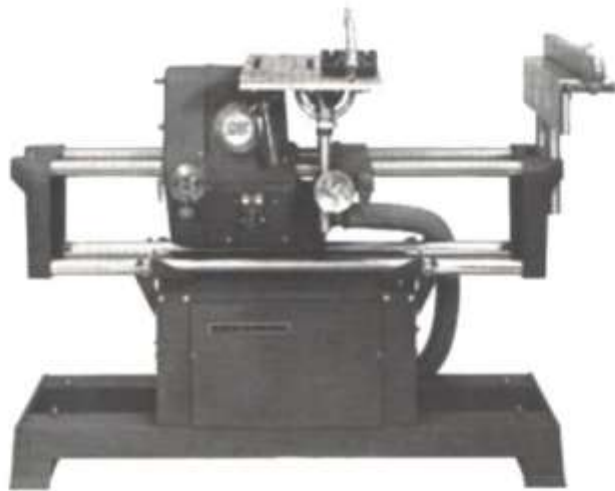




PARTS MANUAL



SHOPSMITH
MARK VII



SHOPSMITH MARK VII PARTS MANUAL

This is a special extraction from the restored Mark VII Manual I recreated in 2016 showing the redrawn Illustrated Parts of a Mark VII. Both are donated without cost to the World Wide Shopsmith Community.

It includes the Drawings, Part Listings and the Color Motor Wiring Diagrams for all (4) Known motor types used in the Mark VII that were expressly created for that manual.

You will find the completely restored manual for the Mark VII by following the link to My Google Drive in the Shopsmith Maintenance and Repair section in the following thread: http://www.shopsmith.com/ss_forum/viewtopic.php?p=185690#p185690

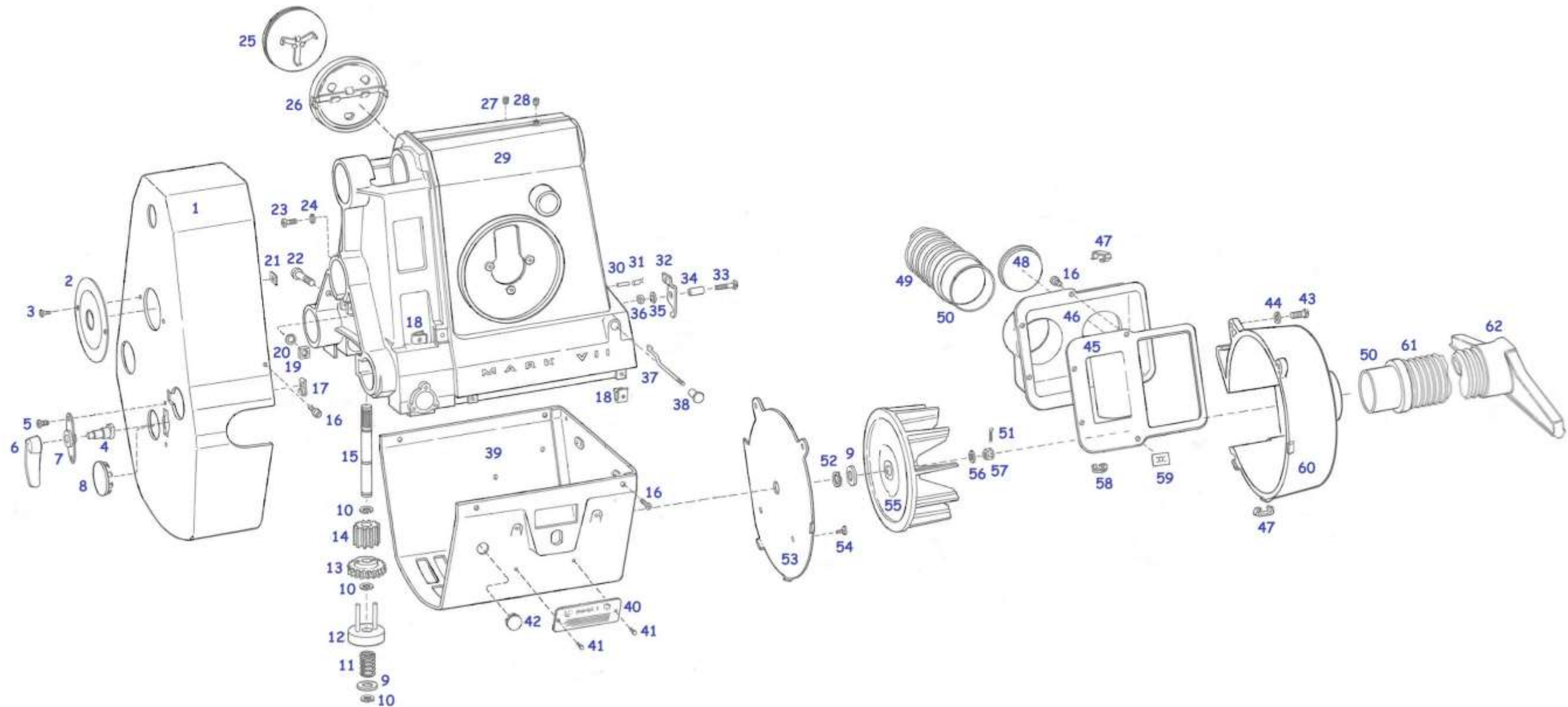
This document in its full size resolution will be placed there as well in the Mark VII folder.

This document *if obtained in the Shopsmith Forum post* as an attachment *has been reduced in size, and image quality* to make it small enough to fit within the Shopsmith Forum attachment limits.

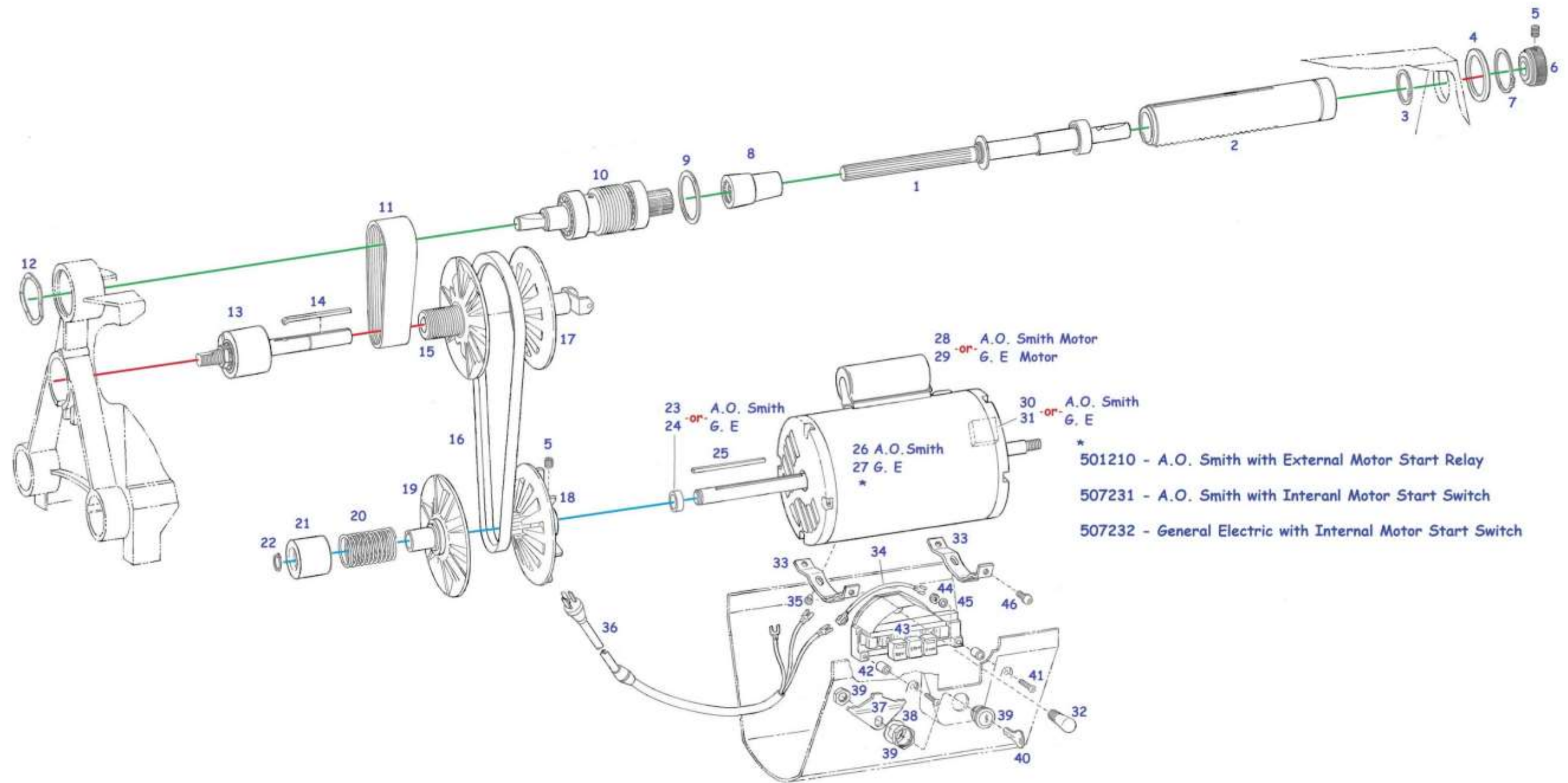
Go to link for My Google Drive to obtain a full size downloadable copy of this document in the Mark VII folder.

- Everett L. Davis 2017 -

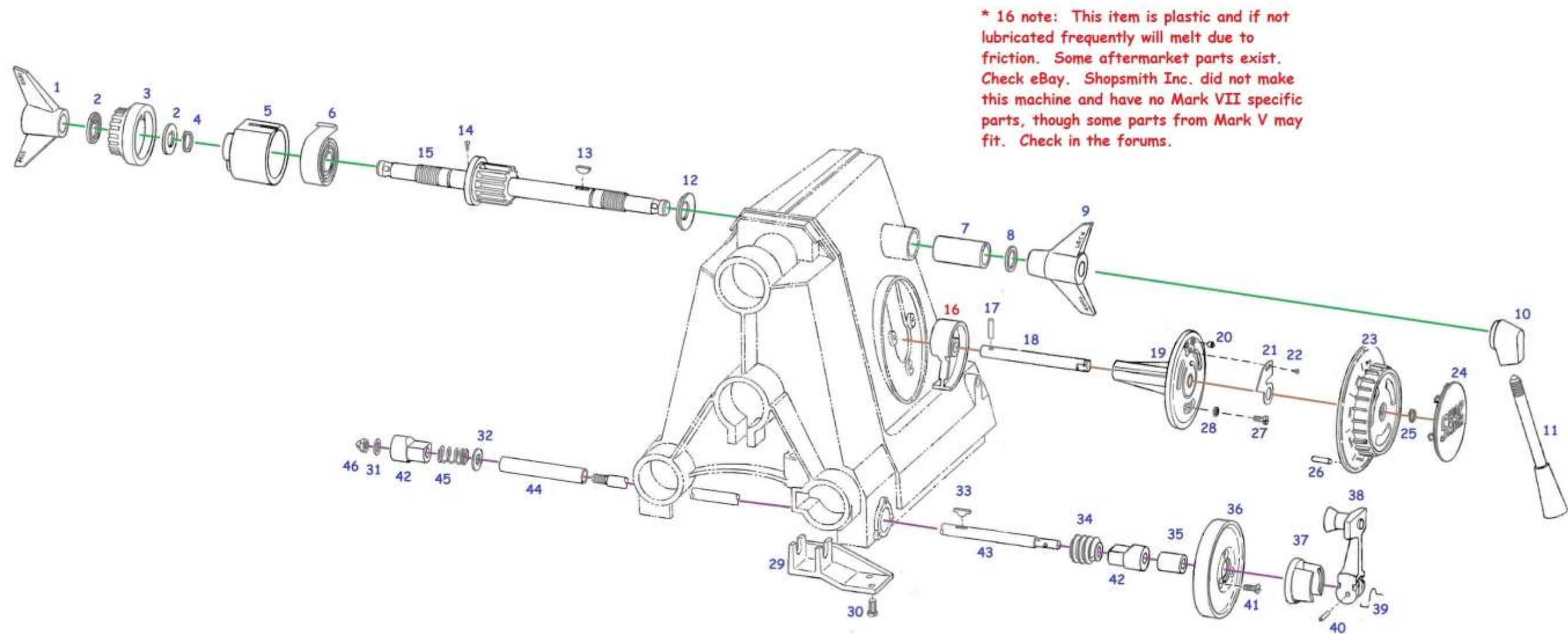
Mark VII Headstock - PM2



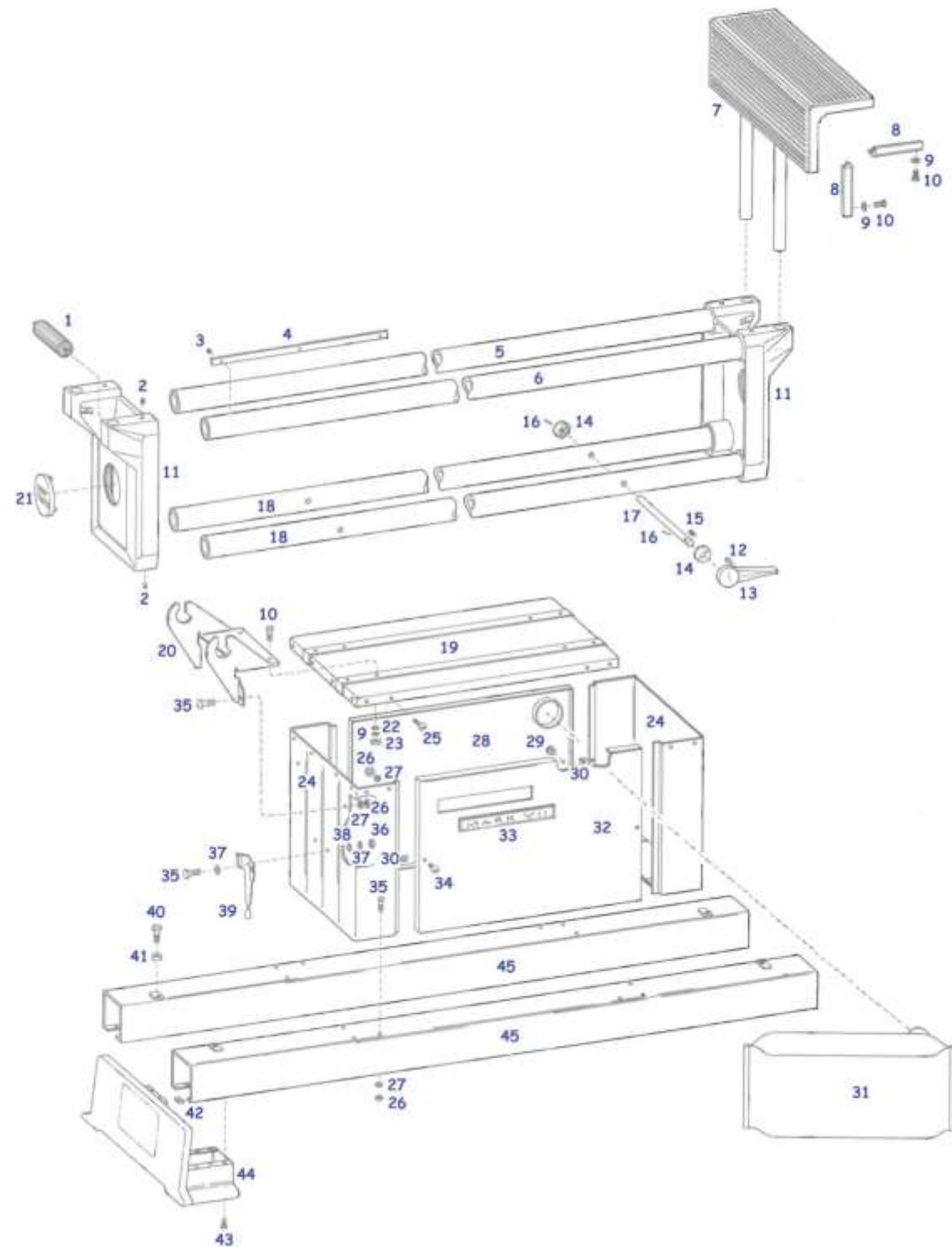
Mark VII Headstock Drive, Motor and Housing - PM4



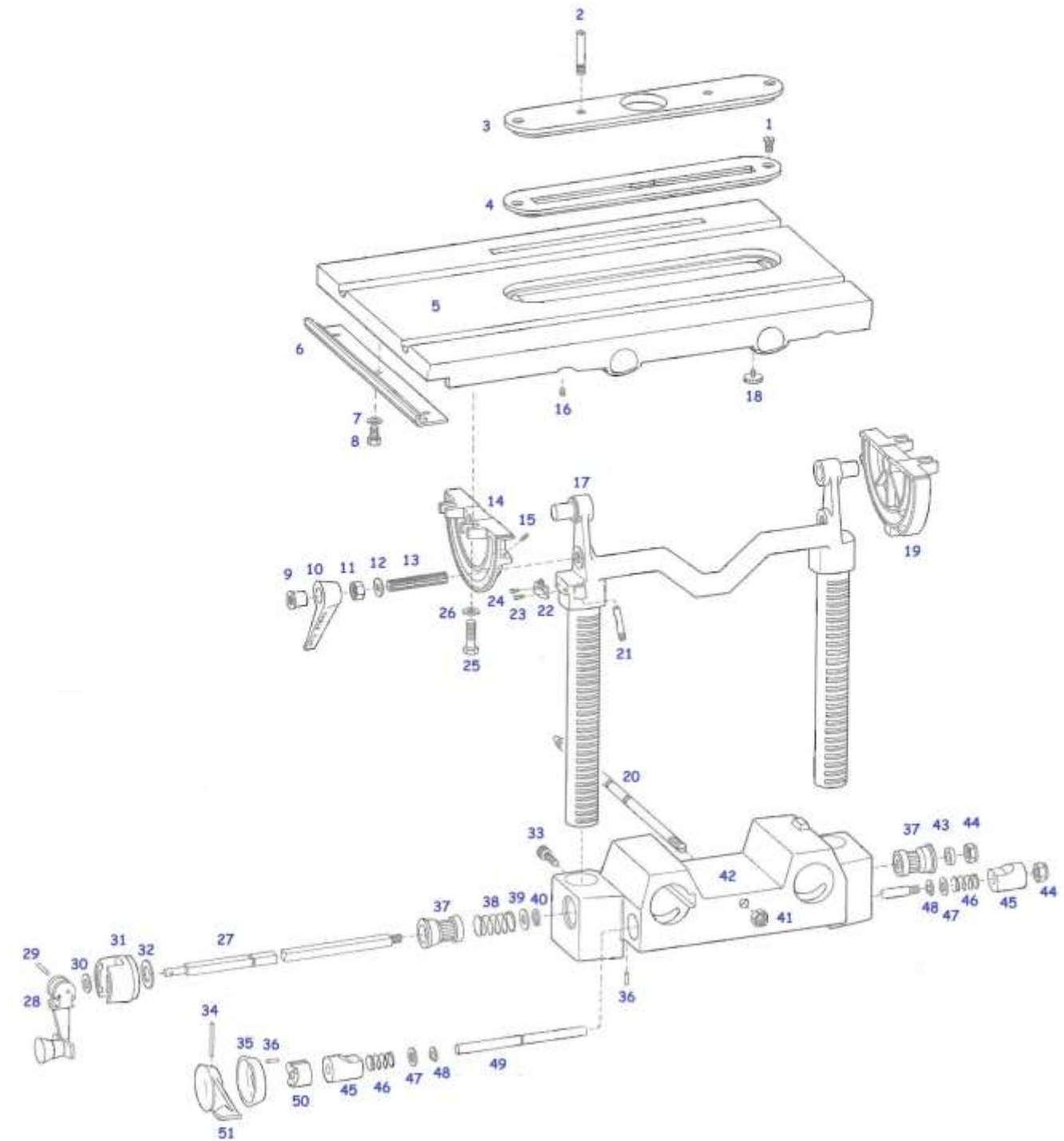
Mark VII Headstock Quill, Speed Control and Rack Advance - PM6

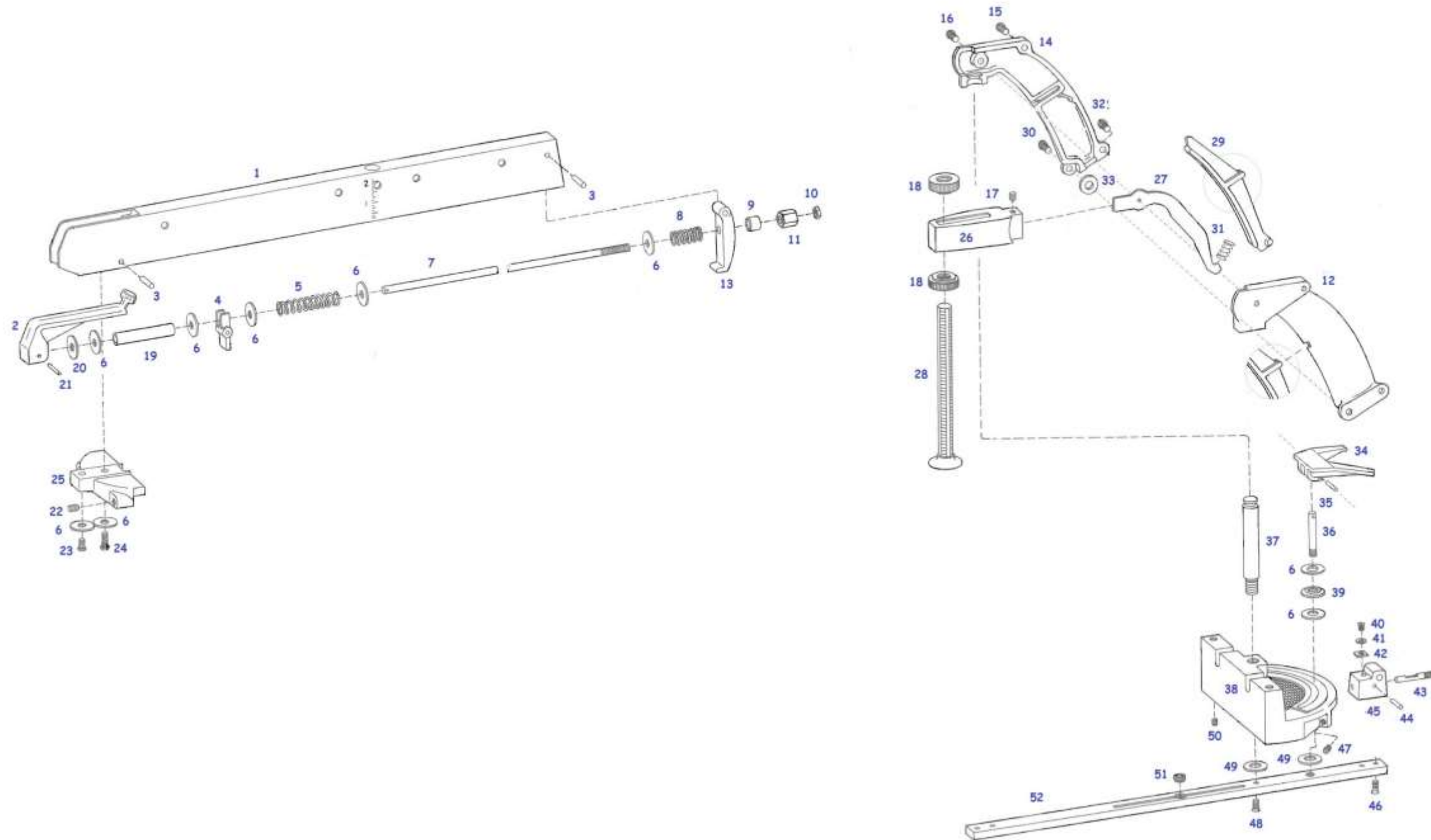


Mark VII Base and Bed - PM8

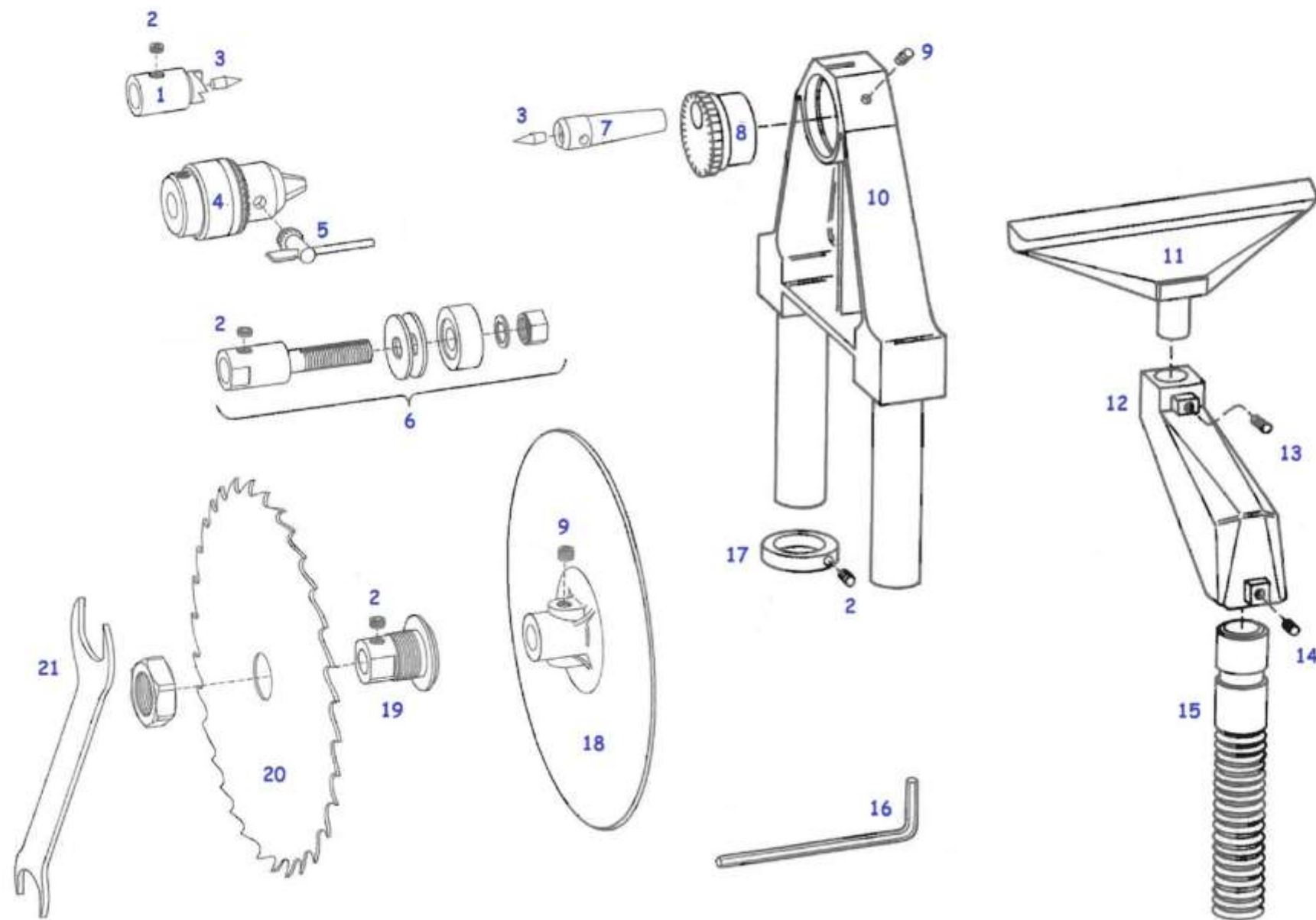


Mark VII Carriage and Table - PM10





Mark VII Tailstock, Tool Rest, Centers, Arbors, Saw & Sanding Disc - PM14



Mark VII Parts List to Illustrations Item Numbers

• item Standard Hardware - May be Purchased Locally

Illustration	Ref No.	Part No.	Part Name
REFER TO PROPER ILLUSTRATION PAGE			
Mark VII Headstock - PM2			
Headstock - PM2		508454	Headstock Assembly - Includes all parts on pages PM2, PM4 & PM6 except 507141 (PM 2) and 501212 & 501231 (PM 6)
Headstock - PM2	1	501356	Cover - Belt
Headstock - PM2	3	507141	Cover - Vent
Headstock - PM2	3	132696	• Screw - Machine (No. 6-32 x 3/8)
Headstock - PM2	4	501362	Cam - Clutch
Headstock - PM2	5	436692	• Screw - Machine (No. 8-32 x 5/16 Pan Hd.)
Headstock - PM2	6	501361	Handle - Clutch (Incl. Setscrew)
Headstock - PM2	7	501363	Mounting Plate - Clutch
Headstock - PM2	8	501358	Plug - Button, 1-1 /2" Hole
Headstock - PM2	9	120396	"Waster (1/2 Norn.)
Headstock - PM2	10	501521	Ring - Retaining (1/2, Inverted)
Headstock - PM2	11	501371	Spring
Headstock - PM2	12	501368	Assembly - Clutch Plate
Headstock - PM2	13	501250	Wheel - Worm
Headstock - PM2	14	501279	Spur Gear - Traverse
Headstock - PM2	15	501367	Shaft - Pinion
Headstock - PM2	16	161869	• Screw - Sheet Metal (No. 8 x 5/8)
Headstock - PM2	17	445341	• Nut - Tinnerman (No. 8-32 Type "J")
Headstock - PM2	18	501656	• Nut - Tinnerman (No. 8, Type "U")
Headstock - PM2	19	120373	• Nut - Square (3/18 - 18)
Headstock - PM2	20	120214	• Lockwasher (5/16 Norm)

Headstock - PM2	21	445124	• Nut - Tinnerman (No. 6-32 Flat Type)
Headstock - PM2	22	502038	Screw - Soc. Cap (5/16 - 18 x 1-1/2)
Headstock - PM2	23	501643	Screw - Self Tapping (No. 10 x 1/2 Stove Hd. Type "Z")
Headstock - PM2	24	501630	• Washer (No. 10 Norn.)
Headstock - PM2	25	501683	Assembly - Medallion
Headstock - PM2	26	501249	Assembly - Escutcheon Plate
Headstock - PM2	27	115321	• Screw - Set (5/16 - 18 x 5/16 Cup Pt.)
Headstock - PM2	28	501634	Screw - Nyloc Set (5/16 - 18 x 3/8 Half Dog
Headstock - PM2	29	507488	Headstock
Headstock - PM2	30	455532	Pin - Roll (1/8 x 1/2)
Headstock - PM2	31	507482	Spring - Latch
Headstock - PM2	32	501553	Lever - Latch
Headstock - PM2	33	436735	• Screw (No. 10-24 x 7 8 Slotted Pan Hd.)
Headstock - PM2	34	501558	Spacer - Latch
Headstock - PM2	35	501589	Washer (9/32 x 3/4 x 3/32)
Headstock - PM2	36	501572	Locknut (No. 10-24 Hex)
Headstock - PM2	37	501554	Rod - Lever
Headstock - PM2	38	501557	Button - Latch
Headstock - PM2	39	501549	Motor Pan Assembly
Headstock - PM2	40	501198	Plate - Caution
Headstock - PM2	41	504031	• Screw - Sheet Metal (No. 6 x 1/4)
Headstock - PM2	42	507041	Plug Button, 13/32" Hole
Headstock - PM2	43	501606	• Screw - Machine (1 4-20 x 5/8 Pan Head)
Headstock - PM2	44	120380	• Lock-washer (1/4 Nom.)
Headstock - PM2	45	501236	Plate - Backing
Headstock - PM2	46	507861	Duct (Includes Plug Cap)
Headstock - PM2	47	501233	Clip - Blower
Headstock - PM2	48	507195	Plug Cap - Duct

Headstock - PM2	49	501502	Hose - Outlet (3 Ft. 8 In.)
Headstock - PM2	50	501445	Adapter - Hose
Headstock - PM2	51	9418403	Pin - Cotter (5/64 x 3/4)
Headstock - PM2	52	501480	Ring - Retaining (1/2, Heavy Duty)
Headstock - PM2	53	507757	Plate - Blower Housing
Headstock - PM2	54	144811	• Screw - Sheet Metal (No. 10 x 1/2)
Headstock - PM2	55	501234	Impeller
Headstock - PM2	56	120394	• Washer (3/8 Nom.)
Headstock - PM2	57	138489	• Lock-washer (3/8 Nom. Ext. Star)
Headstock - PM2	58	102645	• Nut - Slotted (3/8 - 24)
Headstock - PM2	59	501921	Clip - Duct
Headstock - PM2	60	445132	• Nut - Tinnerman (No. 8, Flat Type
Headstock - PM2	61	501238	Housing - Blower
Headstock - PM2	62	501443	Hose - Inlet (5 Ft.)
Headstock - PM2	63	507259	Nozzle - Utility

Mark VII Headstock Drive, Motor and Housing - PM4

Headstock Drive, Motor & Housing - PM4	1	504546	Spindle Assy. - Includes Bearing and Washer
Headstock Drive, Motor & Housing - PM4	2	504545	Quill
Headstock Drive, Motor & Housing - PM4	3	501622	Ring - Retaining (1-3/8, Internal)
Headstock Drive, Motor & Housing - PM4	4	501307	Ring - Bumper
Headstock Drive, Motor & Housing - PM4	5	102581	• Screw - Socket Set (5/18 - 18 x 3/8, Cup Point)
Headstock Drive, Motor & Housing - PM4	6	501306	Knob - Spindle
Headstock Drive, Motor & Housing - PM4	7	501624	Ring - Retaining (1-3/4, Inverted)
Headstock Drive, Motor & Housing - PM4	8	501294	Assembly - Drive and Ring
Headstock Drive, Motor & Housing - PM4	9	501621	Ring - Retaining
Headstock Drive, Motor & Housing - PM4	10	501284	Assembly • Drive Sleeve (Includes Item 8)
Headstock Drive, Motor & Housing - PM4	11	507491	Belt - Poly "V"

Headstock Drive, Motor & Housing - PM4	12	501299	Ring - Retaining (Waved)
Headstock Drive, Motor & Housing - PM4	13	501324	Assembly - Idler Shaft
Headstock Drive, Motor & Housing - PM4	14	501320	Key
Headstock Drive, Motor & Housing - PM4	15	501207	Sheave - Idler Shaft
Headstock Drive, Motor & Housing - PM4	16	507490	Belt - Motor Drive
Headstock Drive, Motor & Housing - PM4	17	501325	Sheave - Control Assembly
Headstock Drive, Motor & Housing - PM4	18	501227	Sheave - Motor Shaft
Headstock Drive, Motor & Housing - PM4	19	501209	Sheave - Floating
Headstock Drive, Motor & Housing - PM4	20	501628	Spring - Motor Shaft
Headstock Drive, Motor & Housing - PM4	21	501657	Case - Spring
Headstock Drive, Motor & Housing - PM4	22	501645	Ring - Retaining (5/8, External)
Headstock Drive, Motor & Housing - PM4	23	501343	Sleeve - Thrust (For A. O. Smith Motor Only)
Headstock Drive, Motor & Housing - PM4	24	501353	Sleeve - Thrust (For G. E. Motor Only)
Headstock Drive, Motor & Housing - PM4	25	501213	Key - Long
Headstock Drive, Motor & Housing - PM4	26	507231	Motor (1-1/8 H.P.), Including Capacitor - A. O. Smith
Headstock Drive, Motor & Housing - PM4	27	507232	Motor (1-1/8 H. P.), Including Capacitor - G. E.
Headstock Drive, Motor & Housing - PM4	28	502087	Capacitor, A. O. Smith Only
Headstock Drive, Motor & Housing - PM4	29	507393	Capacitor, G. E. Only
Headstock Drive, Motor & Housing - PM4	32	501344	Lamp - Switch (G. E. No. 6S6/3)
Headstock Drive, Motor & Housing - PM4	33	501221	Bracket - Motor
Headstock Drive, Motor & Housing - PM4	34	501596	Jumper
Headstock Drive, Motor & Housing - PM4	35	447821	Screw - Tapping (No. 10-24 x 3/8 Pan Hd.)
Headstock Drive, Motor & Housing - PM4	36	501211	Cord and Plug
Headstock Drive, Motor & Housing - PM4	37	501349	Plate - Selector
Headstock Drive, Motor & Housing - PM4	38	501689	Washer - Spring
Headstock Drive, Motor & Housing - PM4	39	501347	Assembly - Lock (Includes Key)
Headstock Drive, Motor & Housing - PM4	40	501348	Key - Lock
Headstock Drive, Motor & Housing - PM4	41	436672	• Screw - Pan Hd. (No. 6-32 x 1-3/4)

Headstock Drive, Motor & Housing - PM4	42	507694	Stand-off - Switch
Headstock Drive, Motor & Housing - PM4	43	501188	Switch
Headstock Drive, Motor & Housing - PM4	44	134530	• Hex Nut, 46-32
Headstock Drive, Motor & Housing - PM4	45	138473	• Lockwasher, 16 External Tooth
Headstock Drive, Motor & Housing - PM4	46	191986	Screw - Pan Hd. (1/4-20 x 3/8 Phillips Sem.)

Mark VII Headstock Quill, Speed Control and Rack Advance - PM6

Headstock Quill, Speed Control, Rack - PM6	1	501203	Lock - Feed Stop
Headstock Quill, Speed Control, Rack - PM6	2	501311	Washer - Serrated
Headstock Quill, Speed Control, Rack - PM6	3	501314	Dial - Depth Gauge
Headstock Quill, Speed Control, Rack - PM6	4	501626	Ring - Retaining (3/4, External)
Headstock Quill, Speed Control, Rack - PM6	5	501310	Housing - Spring
Headstock Quill, Speed Control, Rack - PM6	6	501315	Spring - Quill
Headstock Quill, Speed Control, Rack - PM6	7	501318	Sleeve - Quill Feed
Headstock Quill, Speed Control, Rack - PM6	8	501631	Washer - Bowed
Headstock Quill, Speed Control, Rack - PM6	9	501204	Lock - Quill
Headstock Quill, Speed Control, Rack - PM6	10	501212	Hub - Quill Handle
Headstock Quill, Speed Control, Rack - PM6	11	501231	Handle - Feed Lever
Headstock Quill, Speed Control, Rack - PM6	12	501317	Washer - Spherical
Headstock Quill, Speed Control, Rack - PM6	13	110731	• Key - Woodruff (3/32 x 5/8)
Headstock Quill, Speed Control, Rack - PM6	14	145378	Screw - Drive (No. 6 x 5/16)
Headstock Quill, Speed Control, Rack - PM6	15	501312	Pinion - Quill Feed
Headstock Quill, Speed Control, Rack - PM6	16	501337	Cam - Control
Headstock Quill, Speed Control, Rack - PM6	17	455734	Pin - Roll (1/8 x 3/4)
Headstock Quill, Speed Control, Rack - PM6	18	501336	Shaft
Headstock Quill, Speed Control, Rack - PM6	19	501332	Bracket - Control Assembly
Headstock Quill, Speed Control, Rack - PM6	20	501912	Catch - Bullet (3/8)
Headstock Quill, Speed Control, Rack - PM6	21	501883	Stop - Plate

Headstock Quill, Speed Control, Rack - PM6	22	448013	Screw - Tapping (No. 8-32 x 1/2 Pan Hd.)
Headstock Quill, Speed Control, Rack - PM6	23	502792	Assembly - Control Knob (Includes #455532, Pin - Roll)
Headstock Quill, Speed Control, Rack - PM6	24	501683	Assembly - Medallion
Headstock Quill, Speed Control, Rack - PM6	25	501478	Ring - Retaining (7/16, External)
Headstock Quill, Speed Control, Rack - PM6	26	455532	Pin - Roll (1/8 x 1/2)
Headstock Quill, Speed Control, Rack - PM6	27	447823	Screw - Tapping (No. 10-24 x 1/2 Pan Hd.)
Headstock Quill, Speed Control, Rack - PM6	28	121801	Lockwasher - Internal Tooth (No. 10)
Headstock Quill, Speed Control, Rack - PM6	29	501246	Bracket - Worm
Headstock Quill, Speed Control, Rack - PM6	30	503865	Screw - Tapping (1/4-20 x 1/2 Hex Hd.)
Headstock Quill, Speed Control, Rack - PM6	31	120393	• Washer (5/16 Norn.)
Headstock Quill, Speed Control, Rack - PM6	32	120395	• Washer (7/16 Norn.)
Headstock Quill, Speed Control, Rack - PM6	33	501646	Key - Hypro
Headstock Quill, Speed Control, Rack - PM6	34	501241	Worm
Headstock Quill, Speed Control, Rack - PM6	35	501365	Spacer - Lock
Headstock Quill, Speed Control, Rack - PM6	36	501222	Stop - Lock
Headstock Quill, Speed Control, Rack - PM6	37	501218	Hub - Handle
Headstock Quill, Speed Control, Rack - PM6	38	501685	Assembly - Lock Handle
Headstock Quill, Speed Control, Rack - PM6	39	501599	Spring - Hub
Headstock Quill, Speed Control, Rack - PM6	40	273436	Pin - Roll (1/8 x 11/16)
Headstock Quill, Speed Control, Rack - PM6	41	447213	Screw - Tapping (No. 8-32 x 1/2 Flat Hd.)
Headstock Quill, Speed Control, Rack - PM6	42	501243	Wedge - Lock
Headstock Quill, Speed Control, Rack - PM6	43	501240	Shaft - Lock
Headstock Quill, Speed Control, Rack - PM6	44	504490	Spacer Tube-Spring
Headstock Quill, Speed Control, Rack - PM6	45	501242	Spring
Headstock Quill, Speed Control, Rack - PM6	46	443334	Nut - Hex (5/16-24 Flexloc)

Mark VII Base and Bed - PM8

Base and Bed - PM8	1	501286	Assembly - Handle
--------------------	---	--------	-------------------

Base and Bed - PM8	2	102580	• Screw - Set (5 16-18 x 1/4 Hex Soc. Cup Pt.)
Base and Bed - PM8	3	501476	Rivet - Self-Heading
Base and Bed - PM8	4	501190	Rack
Base and Bed - PM8	5	501193	Tube - Rear Way
Base and Bed - PM8	6	501280	Tube - Front Way
Base and Bed - PM8	7	501416	Assembly - Extension Table
Base and Bed - PM8	8	501270	Bar - Extension Table
Base and Bed - PM8	9	120214	• Lockwasher (5/16 Nom.)
Base and Bed - PM8	10	120228	• Bolt - Hex. Hd. (5/16-18 x 5/8)
Base and Bed - PM8	11	501541	End Cap
Base and Bed - PM8	12	501525	Catch - Bullet
Base and Bed - PM8	13	501524	Handle - Trunnion Lock
Base and Bed - PM8	14	501522	Key - Trunnion
Base and Bed - PM8	15	450221	Screw - Tapping (No. 10-24 x 3/8 Fil. Hd. Phillips)
Base and Bed - PM8	16	273337	Pin - Roll (1/8 x 5/8)
Base and Bed - PM8	17	501523	Rod - Trunnion
Base and Bed - PM8	18	501189	Bed - Tubular
Base and Bed - PM8	19	501537	Deck
Base and Bed - PM8	20	501542	Bracket - Trunnion
Base and Bed - PM8	21	501677	Assembly - Medallion
Base and Bed - PM8	22	120393	• Washer (5/18 Nom.)
Base and Bed - PM8	23	120376	• Nut - Hex (5/16-18)
Base and Bed - PM8	24	501547	Frame - End
Base and Bed - PM8	25	137952	• Screw - Truss Hd. (1/4-20 x 3/8)
Base and Bed - PM8	26	120375	• Nut - Hex (1/4-20)
Base and Bed - PM8	27	120380	• Lockwasher (1/4 Nom.)
Base and Bed - PM8	28	501544	Panel - Rear
Base and Bed - PM8	29	501569	Screw - Thumb (No. 6-32 x 1)

Base and Bed - PM8	30	445370	• Nut - Tinnerman (No. 6-32 Type "J")
Base and Bed - PM8	31	505674	Dust Bag (Pkg. of 3)
Base and Bed - PM8	32	501543	Panel - Front
Base and Bed - PM8	33	507185	Logo - "Mark VI"
Base and Bed - PM8	34	501568	• Screw - Truss Hd. (No. 6-32 x 1 Slotted)
Base and Bed - PM8	35	120706	• Bolt - Hex Hd. (1, 4-20 x 1/2)
Base and Bed - PM8	36	501613	Locknut - Hex (1, 4-20 Jam)
Base and Bed - PM8	37	501589	• Washer - Plain (1/4 Nom)
Base and Bed - PM8	38	501875	Washer - Bowed
Base and Bed - PM8	39	501501	Latch - Safety
Base and Bed - PM8	40	122007	• Screw - Adjusting (5/6-18 x 3/4 Hex Hd.)
Base and Bed - PM8	41	124824	• Nut - Jam (5/16-18)
Base and Bed - PM8	42	128273	• Sheet Metal Screw (#6 x 3/8)
Base and Bed - PM8	43	501881	• Nut - Tinnerman (No. 10-24 Type "U")
Base and Bed - PM8	44	436730	• Screw - Pan Hd. (No. 10-24 x 3/8)
Base and Bed - PM8	45	507242	Assembly - Foot
Base and Bed - PM8	46	507239	Assembly - Rail

Mark VII Carriage and Table - PM10

Carriage and Table - PM10	1	501637	Screw - Cap (1/4-20 x 1/2 Flat Hd.)
Carriage and Table - PM10	2	501551	Post - Shaper Insert
Carriage and Table - PM10	3	505509	Insert - Shaper (Includes Posts)
Carriage and Table - PM10	4	501379	Insert - Saw
Carriage and Table - PM10	5	501251	Table
Carriage and Table - PM10	6	501378	Bar
Carriage and Table - PM10	7	120214	• Lockwasher (5/16 Nom.)
Carriage and Table - PM10	8	120228	• Bolt - Hex Hd. (5/16-18 x 5/8)
Carriage and Table - PM10	9	501388	Cap - Trunnion Stud

Carriage and Table - PM10	10	501220	Handle - Table Tilt
Carriage and Table - PM10	11	120369	• Nut - Hex (3/8-24)
Carriage and Table - PM10	12	501387	Washer (3/8 Square Nom.)
Carriage and Table - PM10	13	501384	Stud - Trunnion
Carriage and Table - PM10	14	501481	Trunnion - Front
Carriage and Table - PM10	15	501407	Screw - Set (No. 10-32 Nylok Special)
Carriage and Table - PM10	16	501647	Screw - Set (5/16-18 x 5/8 Nylok)
Carriage and Table - PM10	17	507768	Assembly - Tie Bar
Carriage and Table - PM10	18	501410	Screw - Thumb
Carriage and Table - PM10	19	501482	Trunnion - Rear
Carriage and Table - PM10	20	501559	Shaft - Interlatch
Carriage and Table - PM10	21	501258	Plunger - Stop
Carriage and Table - PM10	22	501257	Rate - Indicator
Carriage and Table - PM10	23	447825	Screw - Tapping (No. 10-24 x 5/8 Pan Hd.)
Carriage and Table - PM10	24	447823	Screw - Tapping (No. 10-24 x 1/2 Pan Hd.)
Carriage and Table - PM10	25	9415838	• Screw - Machine (3/8-16 x 1 Hex Hd.)
Carriage and Table - PM10	26	501633	Washer - Special (3/8 Nom.)
Carriage and Table - PM10	27	504258	Shaft
Carriage and Table - PM10	28	507509	Knob - Table Height Lock
Carriage and Table - PM10	29	120388	• Washer (3/8 Nom.)
Carriage and Table - PM10	30	507498	Assembly - Wheel Crank
Carriage and Table - PM10	31	501598	• Washer (5/8 Nom.)
Carriage and Table - PM10	32	455921	Pin - Roll (1/8 x 1-1/2)
Carriage and Table - PM10	33	501536	Hub - Handle
Carriage and Table - PM10	34	455532	Pin - Roll (1/8 x 1/2)
Carriage and Table - PM10	35	501392	Assembly - Pinion
Carriage and Table - PM10	36	124925	• Nut - Hex Jam (3/8-24)
Carriage and Table - PM10	37	501390	Carriage

Carriage and Table - PM10	38	504259	Washer - Retaining
Carriage and Table - PM10	39	443334	Nut - Hex (5/16-24 Flexloc)
Carriage and Table - PM10	40	501243	Wedge - Lock
Carriage and Table - PM10	41	501242	Spring
Carriage and Table - PM10	42	120395	• Washer (7/16 Nom.)
Carriage and Table - PM10	43	501518	Ring - Retaining (7/16, "E" Type)
Carriage and Table - PM10	44	501260	Shaft - Lock
Carriage and Table - PM10	45	501530	Spacer - Cam Lock
Carriage and Table - PM10	46	501531	Handle - Lock

Mark VII Fence, Miter Gauge and Grip - PM12

Fence, Miter Gauge and Grip - PM12	1	501226	Fence
Fence, Miter Gauge and Grip - PM12	2	501224	Handle - Fence Lock
Fence, Miter Gauge and Grip - PM12	3	273336	Pin - Roll (3/16 x 1-1/4)
Fence, Miter Gauge and Grip - PM12	4	501399	Clamp - Fence
Fence, Miter Gauge and Grip - PM12	5	501415	Spring - Release, Front
Fence, Miter Gauge and Grip - PM12	6	120393	• Washer (5/16 Nom.)
Fence, Miter Gauge and Grip - PM12	7	501266	Rod - Lock
Fence, Miter Gauge and Grip - PM12	8	501267	Spring - Release, Rear
Fence, Miter Gauge and Grip - PM12	9	501882	Spacer - Back
Fence, Miter Gauge and Grip - PM12	10	124824	• Nut - Jam (5/16-18)
Fence, Miter Gauge and Grip - PM12	11	501538	Nut - Adjusting (5/16-18 Special)
Fence, Miter Gauge and Grip - PM12	12	501468	Grip - Left
Fence, Miter Gauge and Grip - PM12	13	501539	Lock - Back
Fence, Miter Gauge and Grip - PM12	14	501469	Grip - Right
Fence, Miter Gauge and Grip - PM12	15	450213	Screw - Tapping (No- 8-32 x 1/2 Phillips Fil. Hd.)
Fence, Miter Gauge and Grip - PM12	16	450219	Screw - Tapping (No. 8-32 x 7/8 Phillips Fil. Hd.)
Fence, Miter Gauge and Grip - PM12	17	222458	Screw - Set (5/16-18 x 1/4 Fl. Pt.)

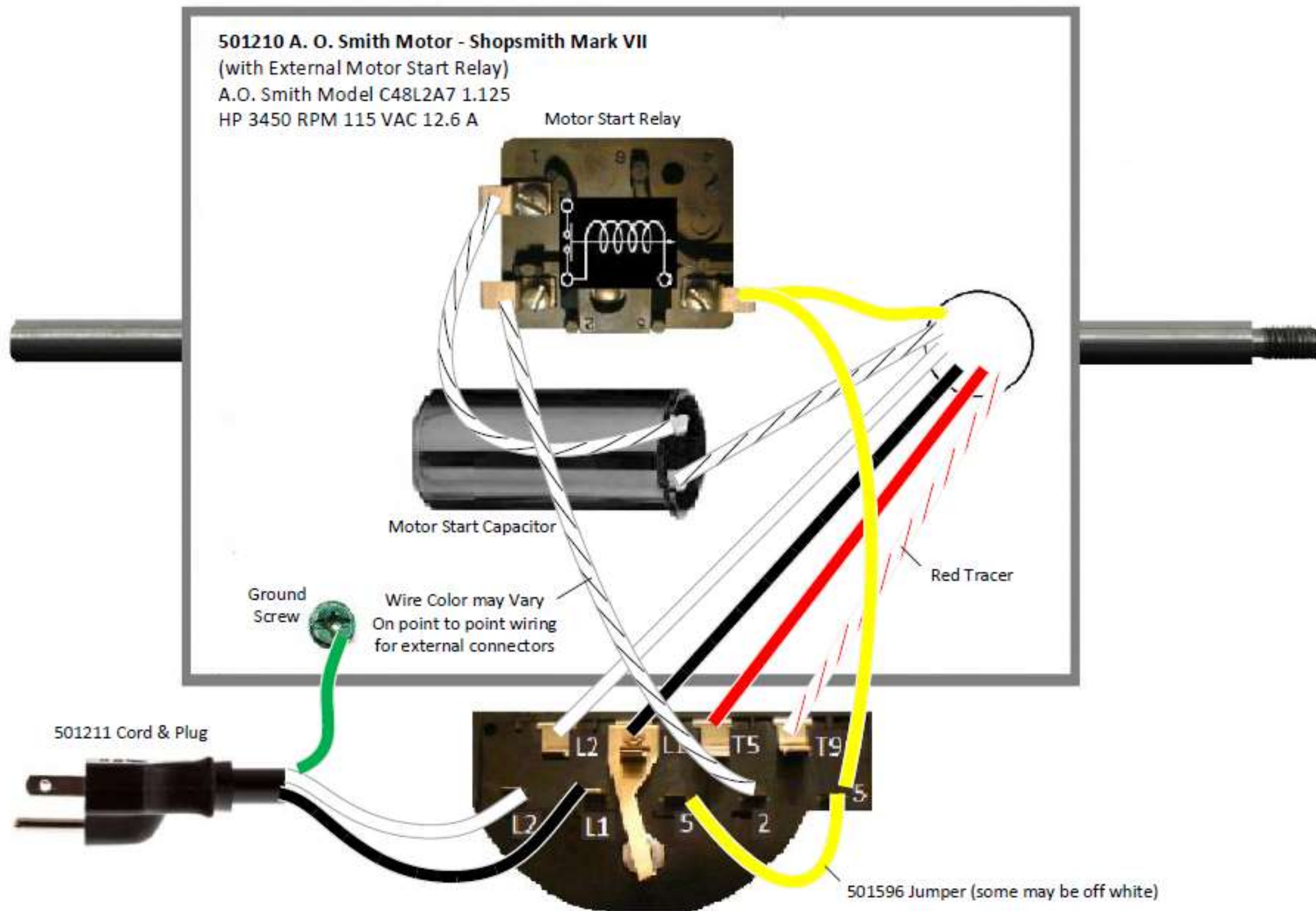
Fence, Miter Gauge and Grip - PM12	18	501482	Knob - Adjusting
Fence, Miter Gauge and Grip - PM12	19	501265	Spacer - Lock
Fence, Miter Gauge and Grip - PM12	20	501268	Washer - Fence
Fence, Miter Gauge and Grip - PM12	21	455862	Pin - Roll (1/8 x 7/8)
Fence, Miter Gauge and Grip - PM12	22	102388	• Screw - Set (5/16-18 x 1 1/4 Oval Pt. Soc.)
Fence, Miter Gauge and Grip - PM12	23	122027	• Bolt - Hex Hd. (5/16-18 x 1-1/4)
Fence, Miter Gauge and Grip - PM12	24	122040	• Bolt - Hex Hd. (5/16-18 x 1-1/2)
Fence, Miter Gauge and Grip - PM12	25	501414	Base - Fence
Fence, Miter Gauge and Grip - PM12	26	501463	Guide - Lock
Fence, Miter Gauge and Grip - PM12	27	501464	Lever - Lock
Fence, Miter Gauge and Grip - PM12	26	501471	Assembly - Lock Stud
Fence, Miter Gauge and Grip - PM12	29	501465	Trigger
Fence, Miter Gauge and Grip - PM12	30	132066	• Screw - Machine (No. 10-24 x 1-1/4 Slotted Fil. Hd.)
Fence, Miter Gauge and Grip - PM12	31	501467	Spring - Lever
Fence, Miter Gauge and Grip - PM12	32	450217	Screw - Tapping (No. 8-32 x 3/4 Phillips Fil. Hd.)
Fence, Miter Gauge and Grip - PM12	33	501470	• Washer (No. 10 Nom.)
Fence, Miter Gauge and Grip - PM12	34	501228	Handle - Clamp
Fence, Miter Gauge and Grip - PM12	35	273436	Pin - Roll (1/8 x 11/16)
Fence, Miter Gauge and Grip - PM12	36	501276	Stud - Protractor
Fence, Miter Gauge and Grip - PM12	37	501466	Stud - Grip
Fence, Miter Gauge and Grip - PM12	38	501412	Protractor - Miter Assembly
Fence, Miter Gauge and Grip - PM12	39	501922	Washer - Coned
Fence, Miter Gauge and Grip - PM12	40	436691	• Screw - Machine (No. 8-32 x 1/4 Pan Hd.)
Fence, Miter Gauge and Grip - PM12	41	501616	• Washer - Plain (No. 8 Nom.)
Fence, Miter Gauge and Grip - PM12	42	501409	Plato - Vernier
Fence, Miter Gauge and Grip - PM12	43	501403	Plunger - Stop
Fence, Miter Gauge and Grip - PM12	44	273337	Pin - Roll (1/8 x 5/8)
Fence, Miter Gauge and Grip - PM12	45	501402	Mount - Indicator

Fence, Miter Gauge and Grip - PM12	46	501635	• Screw - Machine (No. 8-32 x 1/2 Flat Hd.)
Fence, Miter Gauge and Grip - PM12	47	501407	Screw - Set (No. 10-32 Special Nylok)
Fence, Miter Gauge and Grip - PM12	48	501639	Screw - Machine (1/4-20 x 3/4 Fl. Hd Nylok)
Fence, Miter Gauge and Grip - PM12	49	502081	Washer - Special
Fence, Miter Gauge and Grip - PM12	50	501406	Plug - Glide
Fence, Miter Gauge and Grip - PM12	51	501401	Screw - Taper
Fence, Miter Gauge and Grip - PM12	52	501275	Bar - Miter
Fence, Miter Gauge and Grip - PM12	53	222458	Set Screw (5/16-18 x 1/4 Fl. Pt. Soc.)
Fence, Miter Gauge and Grip - PM12	54	501400	Miter Gauge Assy.

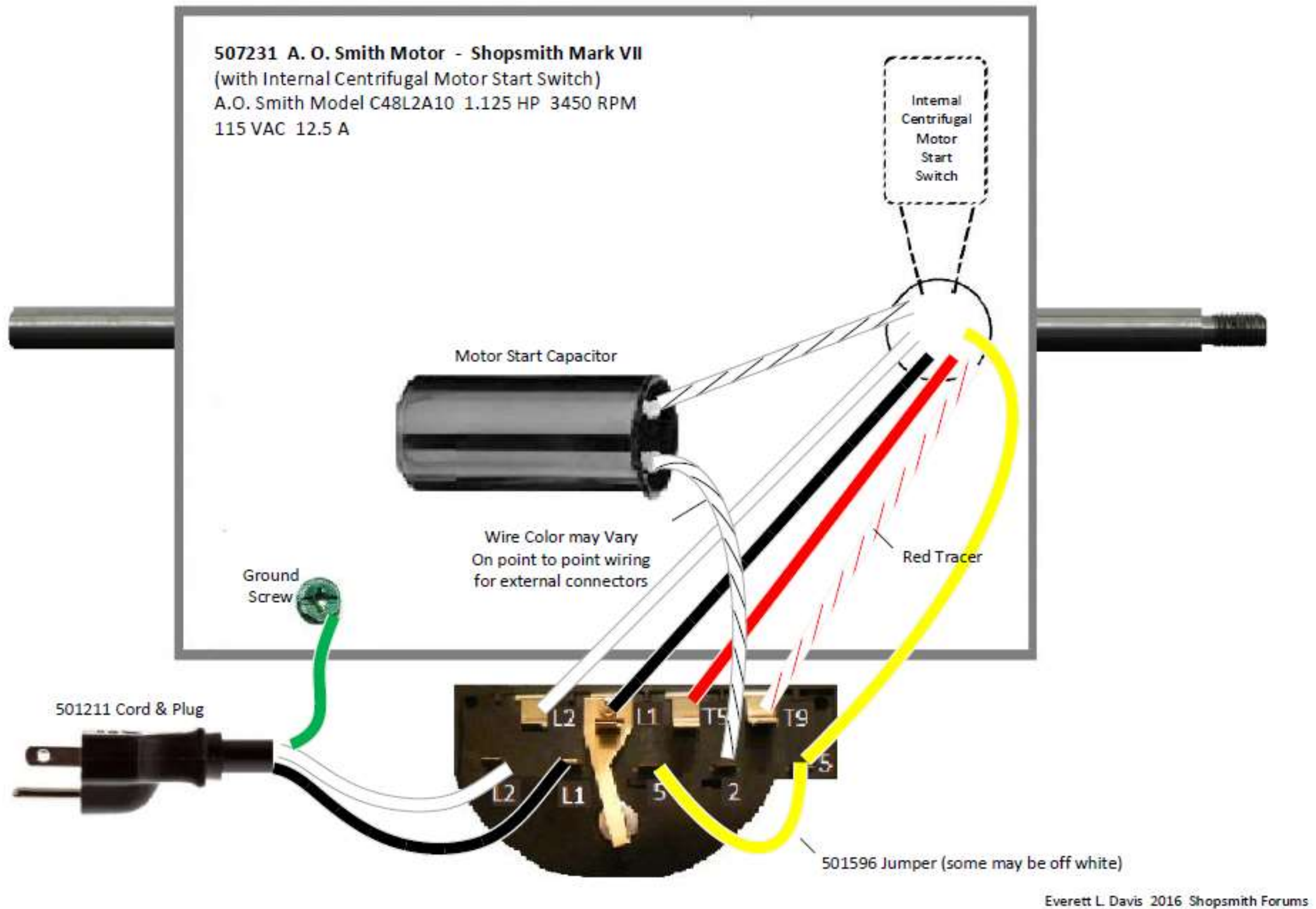
Mark VII Tailstock, Tool Rest, Centers, Arbors, Saw & Sanding Disc - PM1

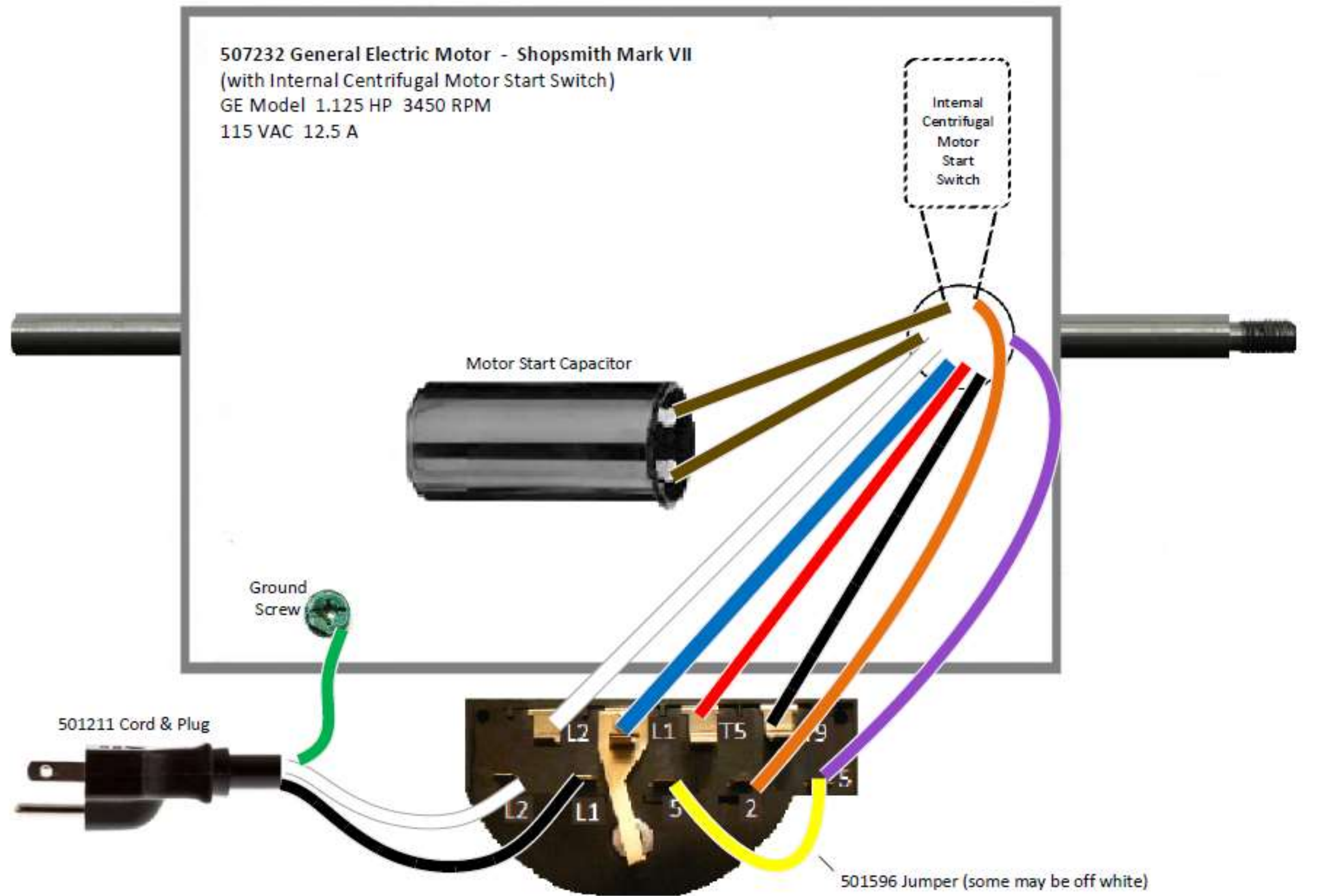
Tailstock, Toolrest, Centers, Arbors Saw & Sanding Disc - PM14	1a	501428	Assembly - Drive Center
Tailstock, Toolrest, Centers, Arbors Saw & Sanding Disc - PM14	1	501429	Center - Drive
Tailstock, Toolrest, Centers, Arbors Saw & Sanding Disc - PM14	2	222458	Screw - Set (5 16-18 x 1/4 Flat Pt. Soc.)
Tailstock, Toolrest, Centers, Arbors Saw & Sanding Disc - PM14	3	801430	Pin - Center
Tailstock, Toolrest, Centers, Arbors Saw & Sanding Disc - PM14	4	805633	Chuck (Includes Set Screw & Key)
Tailstock, Toolrest, Centers, Arbors Saw & Sanding Disc - PM14	5	801419	Key - Chuck
Tailstock, Toolrest, Centers, Arbors Saw & Sanding Disc - PM14	e	505505	Arbor - 1/2 Inch (Incl. Spacers, Tongue Washer, Nut & Setscrew)
Tailstock, Toolrest, Centers, Arbors Saw & Sanding Disc - PM14	7a	501431	Assy. - Cup Center
Tailstock, Toolrest, Centers, Arbors Saw & Sanding Disc - PM14	7	801432	Center - Cup
Tailstock, Toolrest, Centers, Arbors Saw & Sanding Disc - PM14	8	801437	Eccentric Mount
Tailstock, Toolrest, Centers, Arbors Saw & Sanding Disc - PM14	9	222460	• Screw - Set (5/16-18 x 3/8 Flat Pt. Soc.)
Tailstock, Toolrest, Centers, Arbors Saw & Sanding Disc - PM14	10	501435	Assembly - Tailstock and Tube
Tailstock, Toolrest, Centers, Arbors Saw & Sanding Disc - PM14	11	801441	Rest - Tool
Tailstock, Toolrest, Centers, Arbors Saw & Sanding Disc - PM14	11	501442	Arm - Tool Rest
Tailstock, Toolrest, Centers, Arbors Saw & Sanding Disc - PM14	11	102585	Screw - Set (3/16-18 x 1/8 Cup Pt. Soc.)
Tailstock, Toolrest, Centers, Arbors Saw & Sanding Disc - PM14	14	102582	• Screw - Set (5/18-18 x 1/2 Cup Pt. Soc.)
Tailstock, Toolrest, Centers, Arbors Saw & Sanding Disc - PM14	15	501354	Tube - Tool Rest

Tailstock, Toolrest, Centers, Arbors Saw & Sanding Disc - PM14	16	801459	Allen Wrench (5/32 Extra Long)
Tailstock, Toolrest, Centers, Arbors Saw & Sanding Disc - PM14	17	501439	Collar - Tube
Tailstock, Toolrest, Centers, Arbors Saw & Sanding Disc - PM14	18	505550	Disc - Sanding (Incl. Setscrew)
Tailstock, Toolrest, Centers, Arbors Saw & Sanding Disc - PM14	19	505511	Arbor - Saw (Incl. Nut & Setscrew)
Tailstock, Toolrest, Centers, Arbors Saw & Sanding Disc - PM14	20	505544	Blade - All Purpose 10"
Tailstock, Toolrest, Centers, Arbors Saw & Sanding Disc - PM14	21	501425	Wrench - Arbor Nut

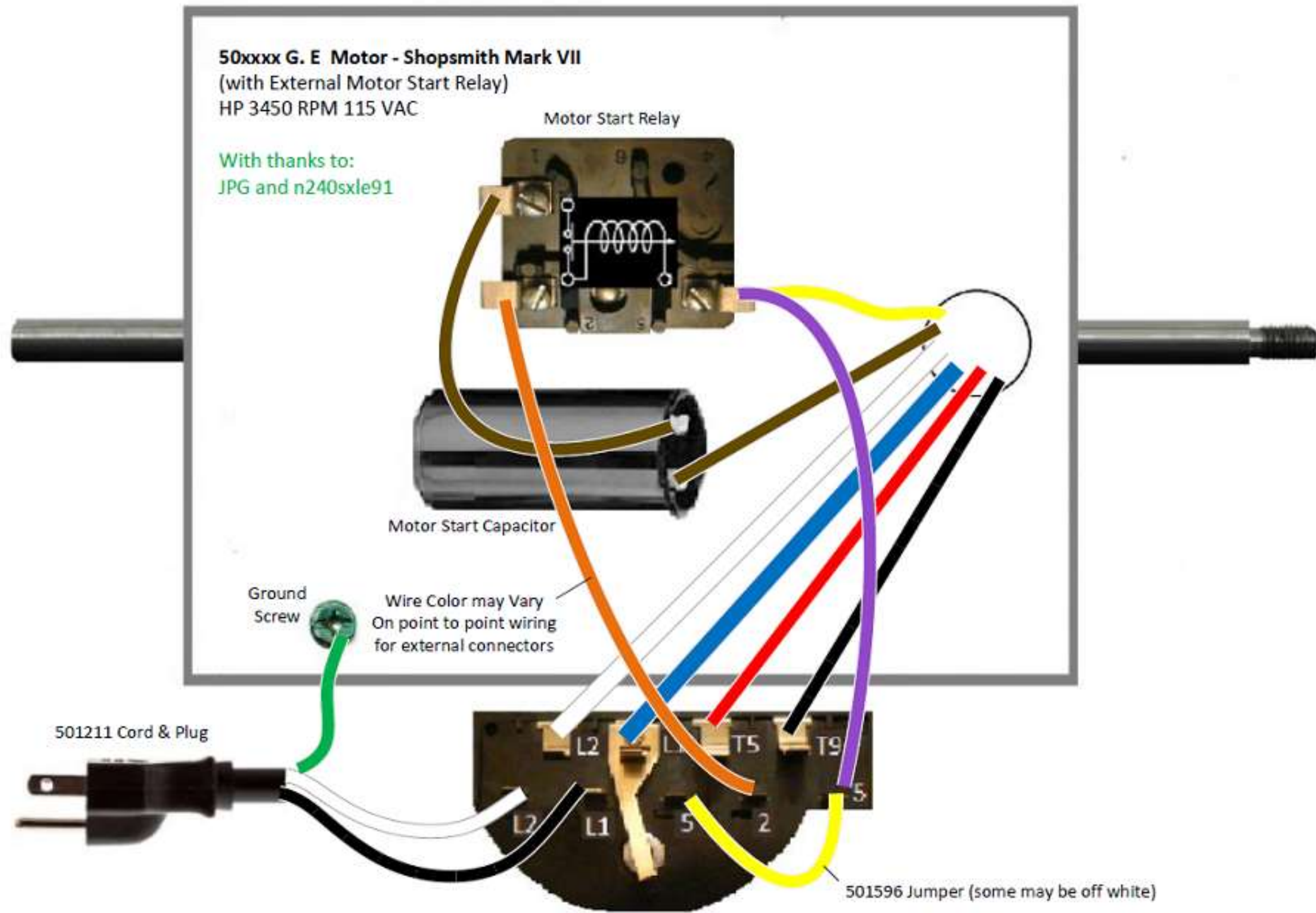


Everett L. Davis 2016 Shopsmith Forums





Everett L. Davis 2016 Shopsmith Forums



Everett L. Davis 2017 Shopsmith Forums

Thanks for all the compliments and comments regarding the full Mark VII Owner’s Manual that I restored previously. I would be remiss if I did not once again thank James Grange Sr. (JPG) in the forums who provided valuable input, insight and proofreading for that project in 2016. He is most definitely a friend and mentor and is the Mark VII Guru in the forums you can trust. I had been asked by a number of folks over the last year to extract and produce this document separately.

I am happy to finally be able to fulfill that request. Obviously, the company that made the Mark VII originally no longer exists, however the folks at Shopsmith today have some parts that are the same that one can buy today as they were unchanged through the years. Go to their Parts Webpage at <http://www.shopsmith.com/service/index.htm> and plug in the part numbers to see if the part is still available today under that number. Through the years, some parts will have undergone improvements, revisions and enhancements that changed the part numbers on subsequent equipment through the years. Since the present folks who own Shopsmith never made those parts, they may or may not know if their part today will interchange.

501284 Drive Sleeve		Mark VII not available under this number today
518145 Drive Sleeve Assembly	\$134.55	Mark V Drive Sleeve today was the same # in 2003 manual I cross checked
504545 <i>Spindle Assembly</i>		Mark VII not available under this number today
		Mark V is not available either; only the “Quill Assembly” is available. Will it interchange? Unknown at this time.
????? Quill Assembly		Mark VII not listed as an assembly only by components
518210 Quill Assembly	\$179.11	Mark V Quill Assembly today was # 514071 in 2003 manual I cross checked

A number of parts in the Quill Feed Mechanism are unchanged and apply to Mark VII and Mark V

501312 Quill Feed Pinion	\$38.00	is the same part on both
521875 Quill Housing w/Spring	\$33.30	is the same part on both
501318 Quill Feed Sleeve	\$4.80	is the same part on both
501311 Washer Serrated	\$4.98	is the same part on both
501317 Washer Spherical	\$4.17	is the same part on both

Obviously if the Quill Feed Pinion which moves the Quill in and out are identical, the Quill Housing teeth are the same, but as stated previously the quills have been updated through the years. Is 518210 the same as 514071 Quill Assembly physically, but with New High Temp bearing grease? Is 518145 the same as 501284 Drive Sleeve Assembly physically, but with New High Temp bearing grease?

Obviously the Mark VII Control Sheave Assembly is different due to the Cam Follower Mechanism with bearing at the end opposed to the Button in the Mark V that is retained against the Quadrant by the Loop.

Kindest Regards,

Everett L. Davis
26 Sep 2017