

Photo: Courtesy Gary Haverman



Gail Haverman with her Dad's gift.

Gary Haverman's kids know just how far their dad will go when he sets out to use his Mark V. When he made this "let's pretend" toy for them, he included the kitchen sink! Gary made this Toy Kitchen with two sheets of 1/2-in. particle board and a few pieces of hardware. After he completed work on his first one, friends liked it so much that they asked him to make more. Gary obliged them, and now offers six simple steps to help you make one of your own.

1. Cut all pieces to size by following the cutout diagrams provided. You'll need a helper to cut the 4 x 8 sheets of particle board safely.* Cut out the sink opening in the countertop (D).

2. Assemble with nails and glue the right side of the refrigerator (B) to the bottom (A). Attach parts G, B, E, H, C and J going from the right side to the left.

*For information on a two-man cutting jig, see HANDS ON!, Mar/Apr 1982.

3. Attach the back (F) to this assembly. Bolt the stove door (N) to the kickboard (K) and attach this assembly. Then, attach the refrigerator kickboard (L).

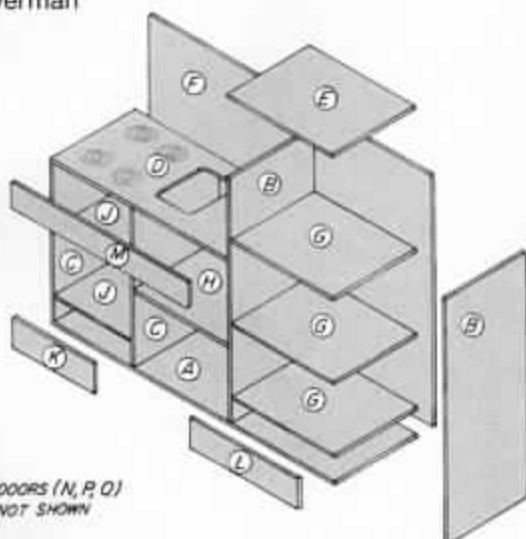
4. Mount the refrigerator doors (P, Q) with strap hinges. First, screw the hinges to the inside of the doors, then attach them to the side of the refrigerator. If you want the hinges mounted flush, you'll need to cut a notch in the side to recess the hinge.

5. Paint the kitchen, using non-toxic paint, the color of your choice. Gary used white, with red trim, and self-adhering vinyl shelf covering behind the stove for a finished effect. Use black paint to create spiral "burners".

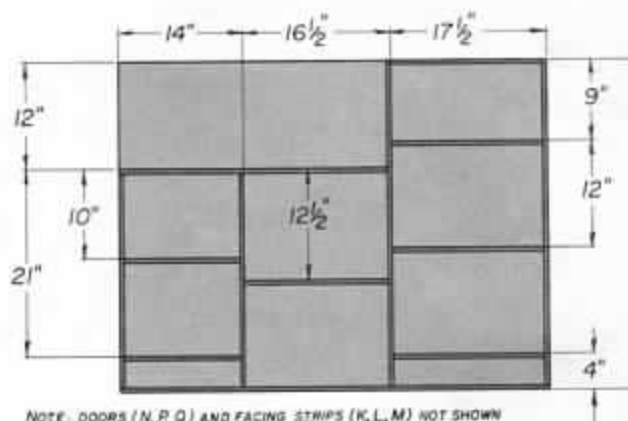
6. Make and attach accessories such as the faucets, knobs, and sink. The sink can be a plastic pan or tray. Make faucets as in the plans, or use discarded faucets for enhanced playability.

The Toy Kitchen

by Gary Haverman



NOTE: DOORS (N, P, Q) NOT SHOWN



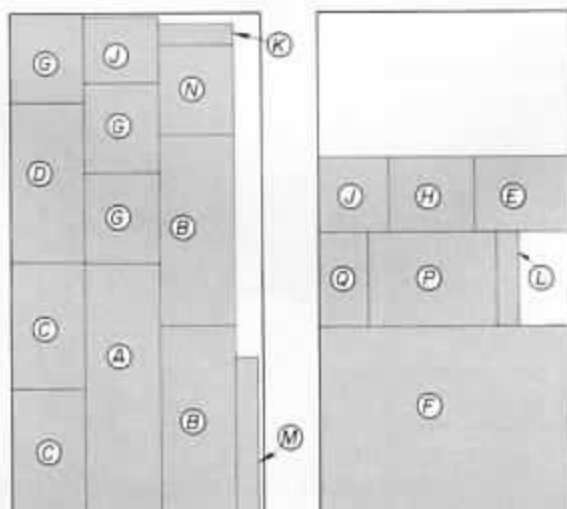
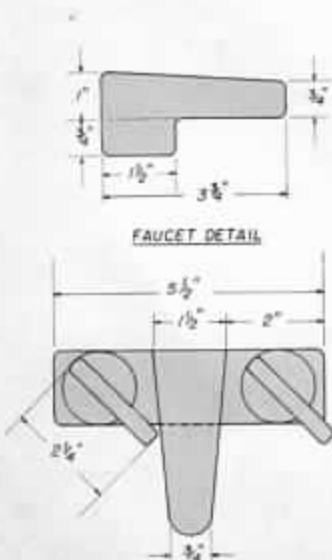
NOTE: DOORS (N, P, Q) AND FACING STRIPS (K, L, M) NOT SHOWN

Bill of Materials (finished dimensions in inches)

A	Bottom	1/2 x 14 x 48
B	Refrigerator sides (2)	1/2 x 14 x 36
C	Stove sides (2)	1/2 x 14 x 24
D	Countertop	1/2 x 14 x 30
E	Refrigerator top	1/2 x 14 x 18
F	Back	1/2 x 37 x 48
G	Refrigerator shelves (3)	1/2 x 14 x 17
H	Shelf	1/2 x 14 x 16
J	Stove shelves (2)	1/2 x 13 x 14
K	Stove kickboard	1/2 x 4 x 14
L	Refrigerator kickboard	1/2 x 4 x 18
M	Sink front	1/2 x 4 x 30
N	Stove door	1/2 x 14 x 17
P	Refrigerator door	1/2 x 18 x 24
Q	Freezer door	1/2 x 9 x 18

Miscellaneous

- 4 3" Strap hinges, with screws
- 2 2" x 2" Butt hinges, with screws



CUTTING DIAGRAM