

hed, lock the
le. Slide the
rth to double
t. Using the
ench, tighten
ap screws (3)

Page 3. Un-
knob (28) and
achine screw
om the fence

the other side
mble with the
as shown in



Figure A-5

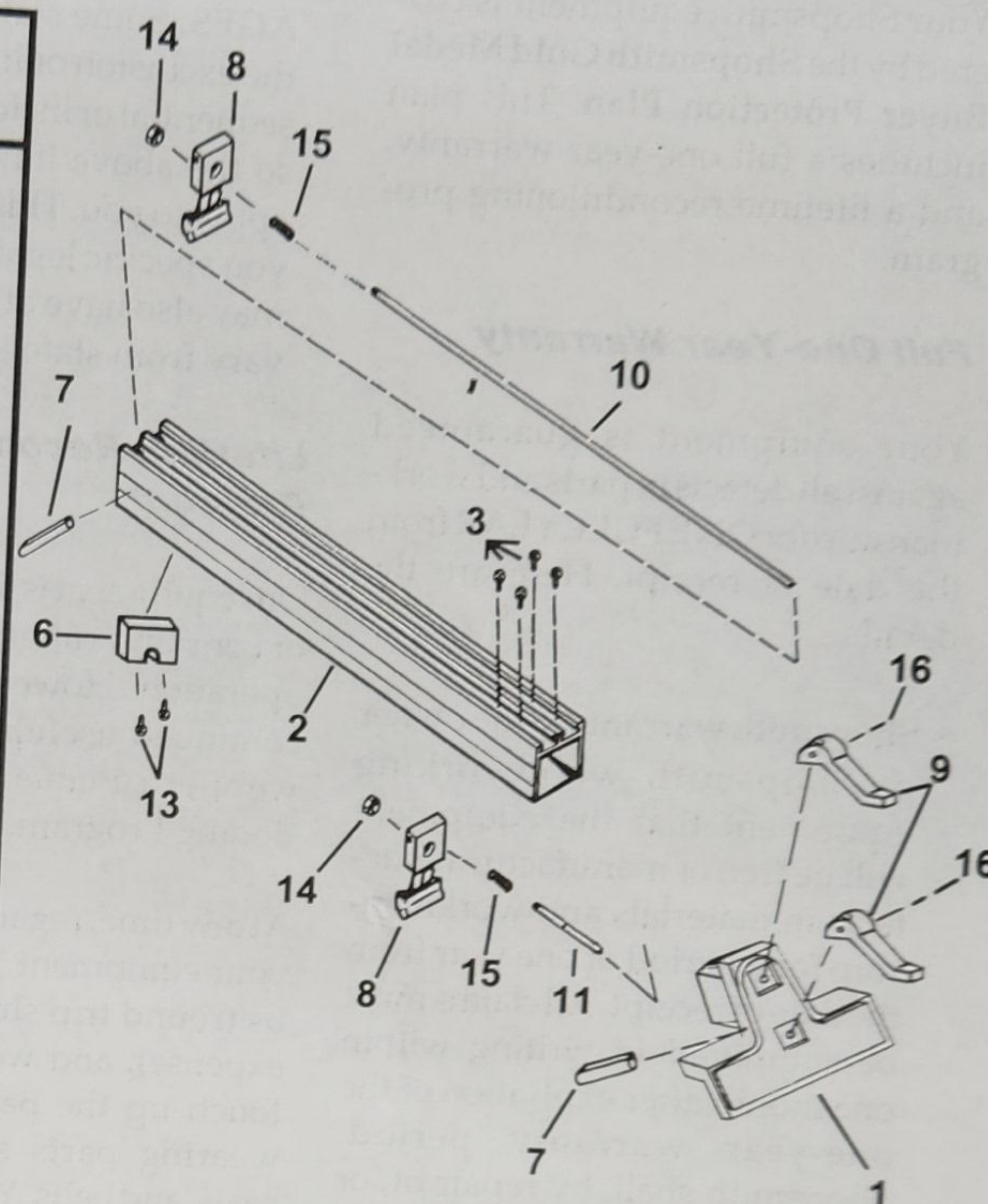
DDLER

old down and
1-1/2" past a
straddle block
ile the bottom
olds down on
ght of the slide
(28). To reverse
knob (28) and
0°. Adjust the
rail (27) firmly
(29). Then tighten



PRO FENCE

Ref. No.	Part No.	Item Description	Qty.
—	518418	Pro Fence Assembly (Incl. 1-17)	
1	518419	Fence Base	1
2	518400	Fence Extrusion	1
3	517829	Screw 1/4-20x1/2 Button Hd	4
4	518404	Front Pad (not shown)	4
5	514317	Plate-wear (not shown)	2
6	518420	Spring Block	1
7	518405	Locking Bar Rod	2
8	518407	Locking Bar	2
9	521578	Locking Handle	2
10	518410	Rod-Long	1
11	518409	Rod-Short	1
12	518423	Rear Pad (not shown)	1
13	518461	Screw #10-24 Flat Hd	2
14	518459	Lock Nut	2
15	518416	Spring	2
16	514527	Rollpin	2



SAW TABLE CONVERSION KIT

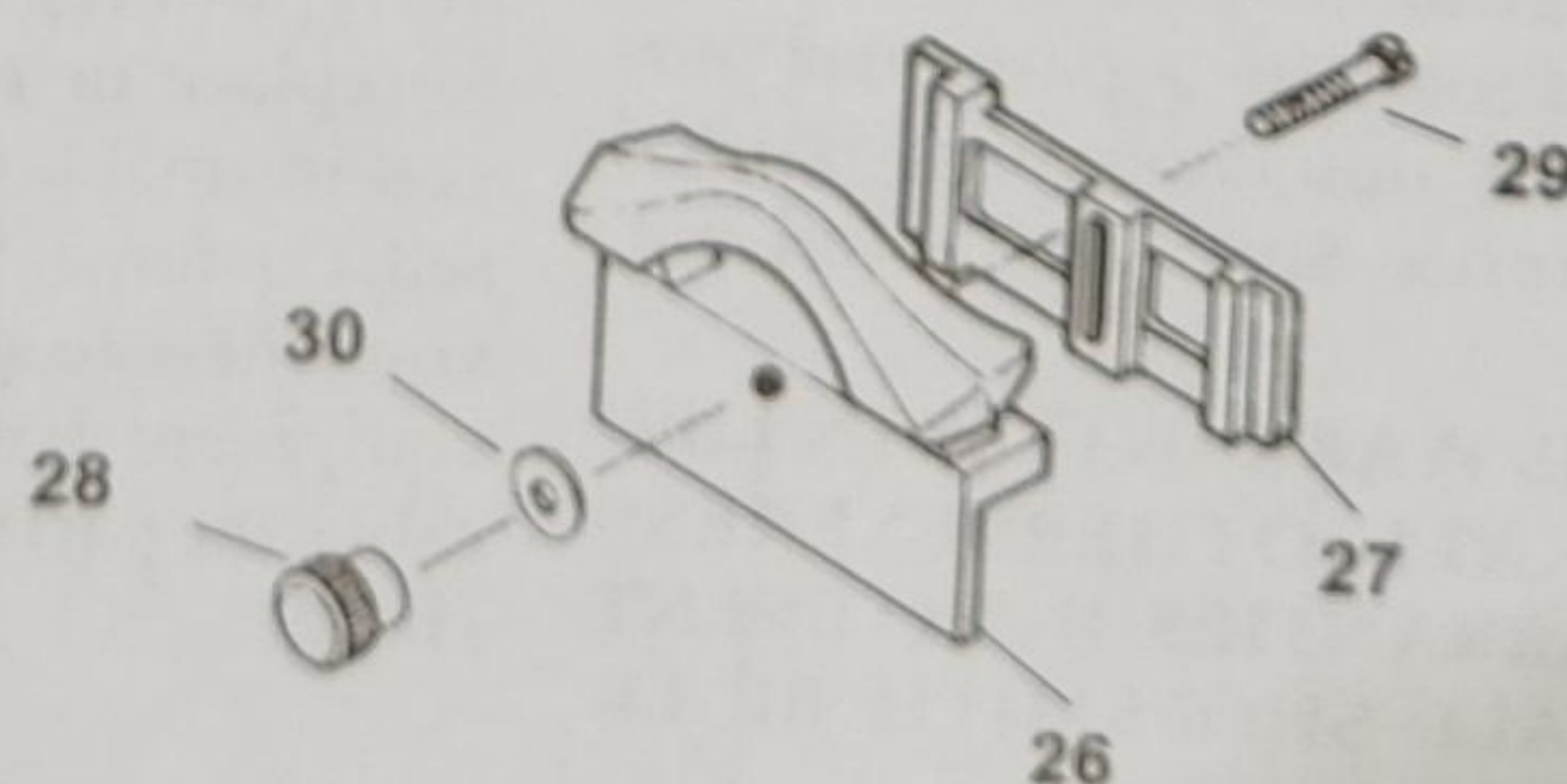
Ref. No.	Part No.	Item Description	Qty.
17	518488	Front Rail Asm. - Main Table	1
18	518489	Front Rail Asm. - Ext Tables	3
19	518490	Rear Rail Asm. - Main Table	1
20	518491	Rear Rail Asm. - Ext Tables	3
21	515859	Knob w/stud	10
22	518462	Spring	10
23	518460	Flat Head Screw	18
24	518403	Table Spacers	18
25	521097	Alignment Gauge	1

Front Rail Assembly (Side view)

Rear Rail Assembly (Side view)

FENCE STRADDLER

Ref. No.	Part No.	Item Description	Qty.
—	521107	Fence Straddler Assembly (incl. 26-30)	
26	521106	Straddle Block	1
27	513706	Slide Rail	1
28	513713	Knob	1
29	521418	Machine Screw	1
30	513864	Washer	1



Under-Table
Routing

Tube Support
Plan