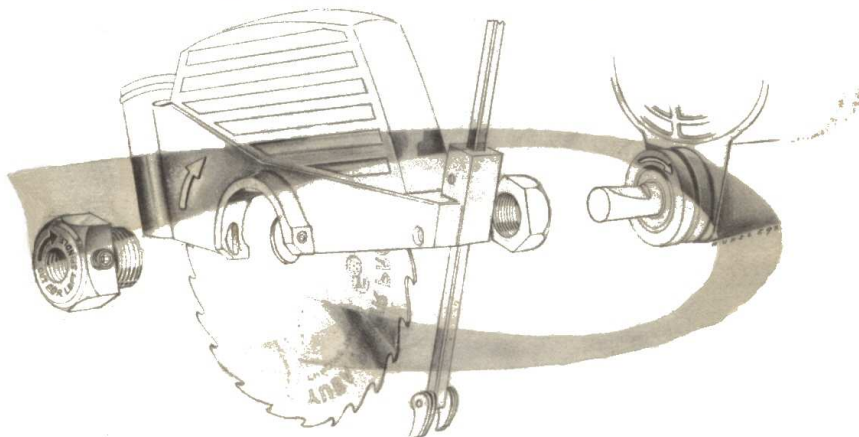


SPARE PARTS LIST



Item No. 700000
Article No. 84-2265

IMPORTANT INSTRUCTIONS



FOLLOW THE ARROWS

It is most important that the above illustration be studied prior to the assembly of the saw blade and arbor or the assembly of the arbor on the spindle shaft. The arrow on the saw guard should always point in the direction of rotation.

When placing the 1-1/4" arbor on a saw blade, always keep the "Logo", printed on the saw blade, on the nut side of the arbor. A good procedure for assembly is to lay the arbor on a flat surface with the threads up, lower the saw blade over the arbor, with the blade teeth pointing toward you on the left

side, and start the nut on the arbor. Following this procedure will assure proper assembly of the saw blade and arbor.

To assure proper assembly of the arbor on the spindle, the following procedure should be used. When placing the arbor on the left spindle end, the arbor set screw should be between the blade and the end of the shaft. When placing the arbor on the right spindle end, the arbor set screw should be between the blade and the cradle casting.

SERVICE

Your SAWSMITH carries a one-year warranty against defective materials or workmanship, provided you signed and returned the warranty card that came with your machine. Should you have occasion for repair or replacement of a part under warranty, contact your SAWSMITH dealer. He has current repair information and part prices.

Many SAWSMITH dealers maintain a stock of replacement parts and can give excellent mechanical service.

If an individual part is not included in the parts list, or shown on the exploded drawing, it is not sold separately.

YUBA POWER PRODUCTS, INC.
800 EVANS ST., CINCINNATI 4, OHIO

A Subsidiary of
YUBA CONSOLIDATED INDUSTRIES, INC.

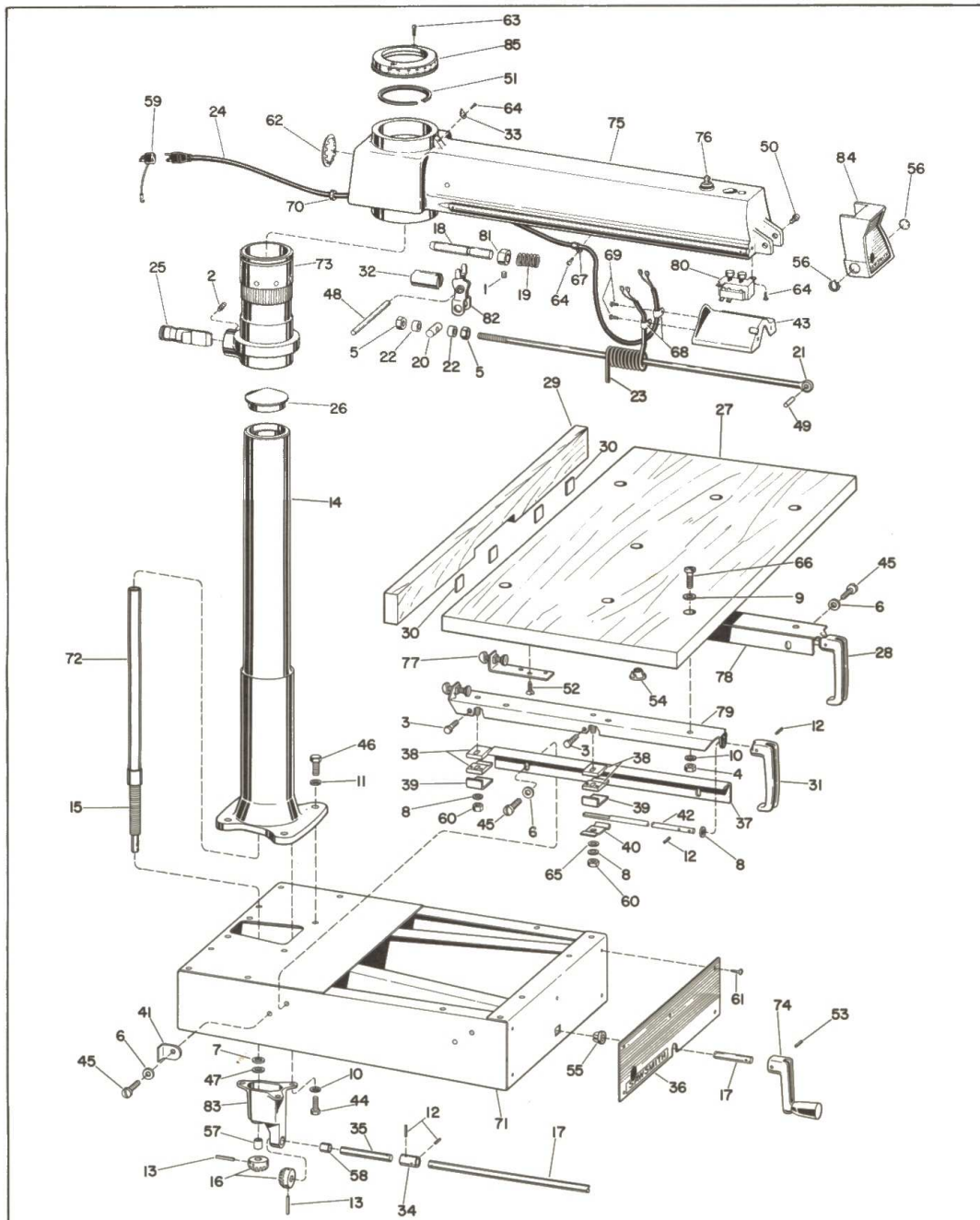


Trademark Reg.
Bulletin No. 9186 9/59

Copyright
1959

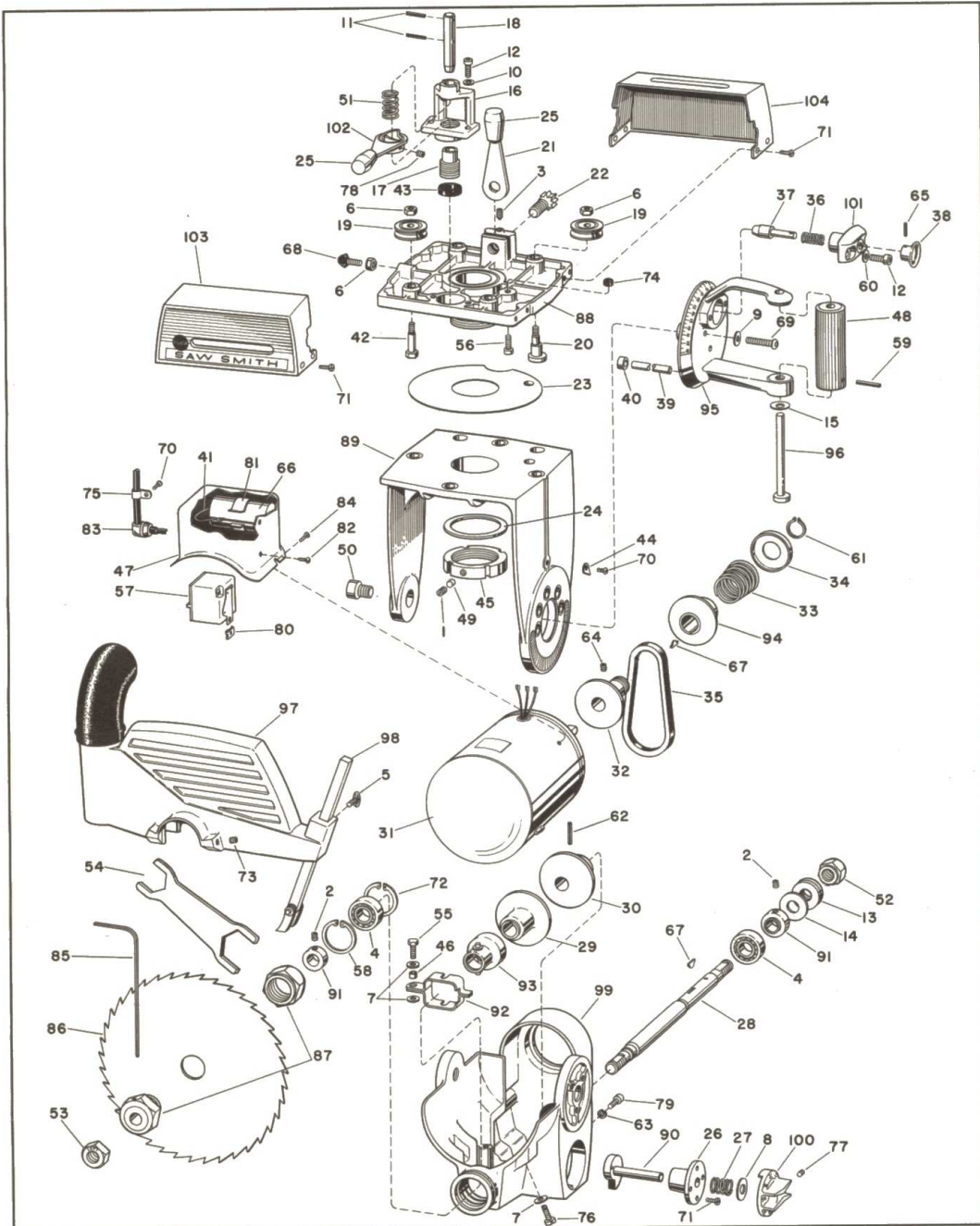


PARTS FOR BASE, COLUMN, ARM AND TABLE



See page 5 for Parts List.

PARTS FOR MOTOR-CARRIAGE ASSEMBLY



See page 4 for Parts List.

PARTS LIST FOR MOTOR-CARRIAGE ASSEMBLY

REF. NO.	PART NO.	DESCRIPTION	REF. NO.	PART NO.	DESCRIPTION
1	1014	Set Screw, 5/16"-18 NC x 5/16" L., Cup Point	55	6307	Hex Bolt, 1/4"-20 x 3/4" L.
2	1017	Set Screw	56	6463	Cap Screw, 1/4"-20 x 5/8" L., Socket Hd.
3	1075	Set Screw, 5/16"-18 x 5/8" L., Cone Point	57	6478	Relay
4	1133	Bearing	58	6481	Snap Ring-Beveled (Truarc N5002-156)
5	1309	Thumb Screw, 1/4"-20 x 1/2" L.	59	6488	Pin-Roll, 1/8" x 1-1/8" L.
6	1409	Hex Nut, 5/16" - 18, Jam Lock	60	6490	Lockwasher, 5/16" Nom. I.D., Hi-Collar
7	1501	Washer, 1/4" Nom. I.D.	61	6492	Ring-Retaining
8	1502	Washer, 3/8" Nom. I.D.	62	6576	Pin-Roll, 3/16" x 1-1/8" L.
9	1527	Lockwasher, 5/16" Nom. I.D.	63	6604	Lockwasher, 1/4" Nom. I.D., Hi-Collar
10	1538	Lockwasher, 5/16" Nom. I.D.	64	6606	Set Screw, 5/16"-24 x 1/4" L., Cup Point
11	1638	Pin - Roll, 1/8" x 1" L.	65	6609	Roll Pin, 3/32" x 1/2" L.
12	2078	Cap Screw, 5/16"-18 x 5/8" L., Socket Hd.	66	6610	Capacitor
13	2355	Washer	67	6620	Key - Hi-Pro
14	3560	Washer	68	6635	Stop-Rubber, Threaded Shank
15	4604	Washer-Spring	69	6636	Cap Screw, 5/16"-18 x 1-3/8" L., Socket Button Hd.
16	4703	Mount-Lock	70	6651	Sem, #8-32 x 3/8" L., Self Tapping
17	4704	Screw-Clamp	71	6652	Sem, #10-24 x 3/8" L., Self Tapping
18	4706	Pin-Yoke Lock	72	6653	Snap Ring (Truarc 5008-156)
19	4708	Glide Bearing	73	6657	Set Screw, 5/16"-18 x 5/8" L., Cone Point Socket Set
20	4710	Eccentric	74	6659	Cap-Bumper
21	4712	Handle-Carriage Lock	75	6660	Clip-Wire
22	4714	Screw-Jam, 1/2" - 13 L.H. Thd.	76	6662	Screw, 1/4"-20 x 5/8" L., Pan Hd., Slotted
23	4716	Shim	77	6664	Set Screw, #10-24 x 3/8" L.
24	4718	Washer	78	6665	Set Screw, #10-24 NC x 1/4" L., Cup Point, Slot
25	4724	Knob-Plastic	79	6666	Cap Screw, 1/4"-20 x 2-1/4" L., Fill Hd.
26	4727	Locator-Speed	80	6667	Speed Nut-#8A Tinnerman
27	4728	Spring	81	6668	Clip-Capacitor
28	4732	Shaft-Spindle	82	6669	Screw, #8A x 1/2" L., Rd. Hd.
29	4738	Pulley-Moveable Half	83	6674	Bushing-Strain Relief
30	4739	Pulley-Fixed Half	84	6675	Screw, #10Z x 5/16" L., Pan Hd.
31	4741	Motor, 1 H.P., G.E.	85	12028	Wrench-Allen, 5/32" L.
	4871	Motor-Dual Voltage	86	22051	Blade-Saw
32	4742	Sheave, Friction	87	27032	1-1/4" Arbor-Saw
33	4745	Spring	88	700014	Carriage Assembly
34	4746	Retainer-Spring	89	700015	Yoke Casting Assembly
35	4747	Belt-Drive	90	700020	Shaft Assembly-Cam
36	4751	Spring	91	700021	Collar Assembly
37	4752	Pin-Locating	92	700022	Yoke Assembly-Shaft
38	4753	Knob	93	700023	Bearing & Cup Assembly
39	4759	Pin-Cradle Lock	94	700027	Sheave Assembly-Spring
40	4760	Plug-Cradle	95	700030	Handle Assembly-Cradle Control
41	4791	Connection	96	700032	Cam Shaft Assembly
42	4792	Bolt-Special	97	700038	Guard Assembly
43	4801	Ring-Friction	98	700040	Anti-Kickback Assembly
44	4808	Pointer	99	700042	Cradle & Cover Assembly
45	4841	Nut-Pivot	100	700046	Dial Assembly
46	4846	Spacer, 3/8" O.D. x 1/4" I.D. Nom.	101	700050	Mount Assembly-Index
47	4847	Box	102	700055	Handle Weldment
48	4849	Handle-Twist Lock	103	700062	Cover Assembly, L.H.
49	4851	Plug-Nylon	104	700063	Cover Assembly, R.H.
50	4852	Cap Screw, 1/2"-13 x 1/2" L., Socket Hd. Special			
51	4853	Spring			
52	4861	Nut-Spindle, R.H.			
53	4864	Nut-Spindle, L.H.			
54	4868	Wrench-Arbor			

See page 3 for Illustration.

PARTS LIST FOR BASE, COLUMN, ARM AND TABLE

REF. NO.	PART NO.	DESCRIPTION	REF. NO.	PART NO.	DESCRIPTION
1	1019	Set Screw, 1/4"-28 x 1/4" L., Cup Point	45	6367	Screw, 1/4"-20 x 1/2" L., Slotted Pan Hd.
2	1061	Set Screw, 5/16"-18 x 3/8" L., Cup Point	46	6456	Cap Screw, 3/8"-16 x 1" L., Hex Hd.
3	1331	Hex Bolt, 1/4"-20 x 5/8" L.	47	6464	Washer-Thrust
4	1414	Hex Nut, 5/16" - 18	48	6472	Pin-Drive-Lok, 3/8" x 2" L., Type "C"
5	1482	Hex Nut, 5/16" - 18, Gripo Jam	49	6473	Pin-Drive-Lok, 5/16" x 1" L.
6	1501	Washer, 1/4" Nom. I.D.	50	6474	Cap Screw, 5/16"-18 x 5/16" L., Socket Hd.
7	1502	Washer, 3/8" Nom. I.D.	51	6475	Snap Ring
8	1510	Washer, 5/16" Nom. I.D.	52	6494	Screw-Wood, #12 x 3/4" L., Flat Hd.
9	1530	Washer, 5/16" Nom. I.D.	53	6573	Pin-Roll, 3/16" x 3/4" L.
10	1538	Lockwasher, 5/16" Nom. I.D.	54	6611	Nut-Tee, 5/16" - 18
11	1546	Lockwasher, 3/8" Nom. I.D.	55	6625	Grommet (Fastex #218-320402-01)
12	1609	Pin-Roll, 1/8" x 3/4" L.	56	6637	Plug-Hole
13	1638	Pin-Roll, 1/8" x 1" L.	57	6639	Bushing
14	4670	Column	58	6640	Bushing
15	4674	Shaft-Screw	59	6642	Adapter-Plug
16	4676	Gear-Bevel	60	6644	Hex Nut-Center Lock, 5/16" - 18
17	4677	Shaft-Riser	61	6648	Sheet Metal Screw, #6 x 1/2" L., Phill. Hd.
18	4683	Pin-Arm Indexing	62	6649	Plug-Hole
19	4684	Spring	63	6650	Sem, #6-32 x 1/2" L., Self Tapping
20	4685	Pin-Pivot	64	6651	Sem, #8-32 x 3/8" L., Self Tapping
21	4686	Rod-Lock	65	6654	Washer-Spring
22	4687	Spacer	66	6656	Machine Screw, 5/16"-18 x 1-1/4" L. Pan Hd.
23	4694	Wire-Coiled	67	6660	Clip-Wire
24	4698	Wire-Main, with Plug	68	6670	Clamp
25	4700	Pin-Collar	69	6671	Screw, #8Z x 5/8" L.
26	4701	Cap	70	6673	Grommet
27	4761	Table	71	700003	Base Weldment
28	4769	Handle, R. H.	72	700007	Tube Assembly
29	4770	Fence	73	700010	Collar Assembly
30	4771	Spacer	74	700017	Crank Assembly-Hand
31	4776	Handle, L. H.	75	700043	Arm & Track Assembly
32	4807	Pin-Arm Lock	76	700048	Lock Assembly-With Key
33	4808	Pointer	77	700049	Bracket Assembly-Aux. Fence
34	4817	Coupling	78	700051	Channel Assembly, R. H.
35	4818	Shaft-Stub	79	700052	Channel Assembly, L. H.
36	4822	Logo-Plate	80	700057	Switch Assembly
37	4836	Rail	81	700058	Collar Assembly
38	4837	Guide	82	700059	Plate Assembly-Lever
39	4838	Plate	83	700060	Bracket Assembly - Gear (Incl. Ref. Nos. 57 & 58)
40	4839	Clamp	84	700061	Handle Assembly-Arm Lock
41	4840	Cam Lift	85	700064	Cap Assembly-Miter
42	4843	Rod-Lock			
43	4860	Shield			
44	6353	Hex Bolt, 5/16"-18 x 3/4" L.			

See page 2 for Illustration.