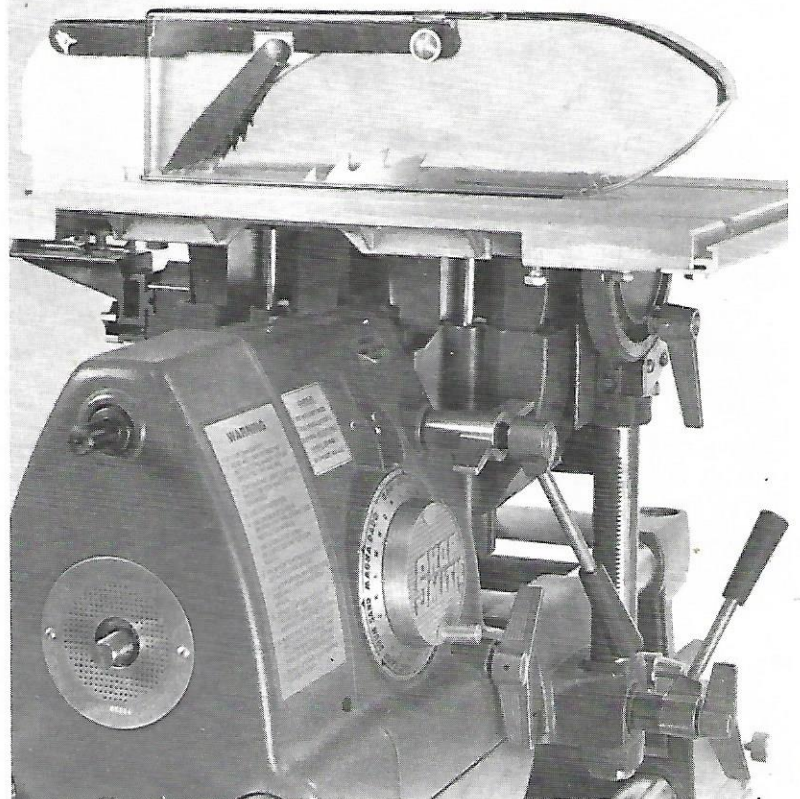


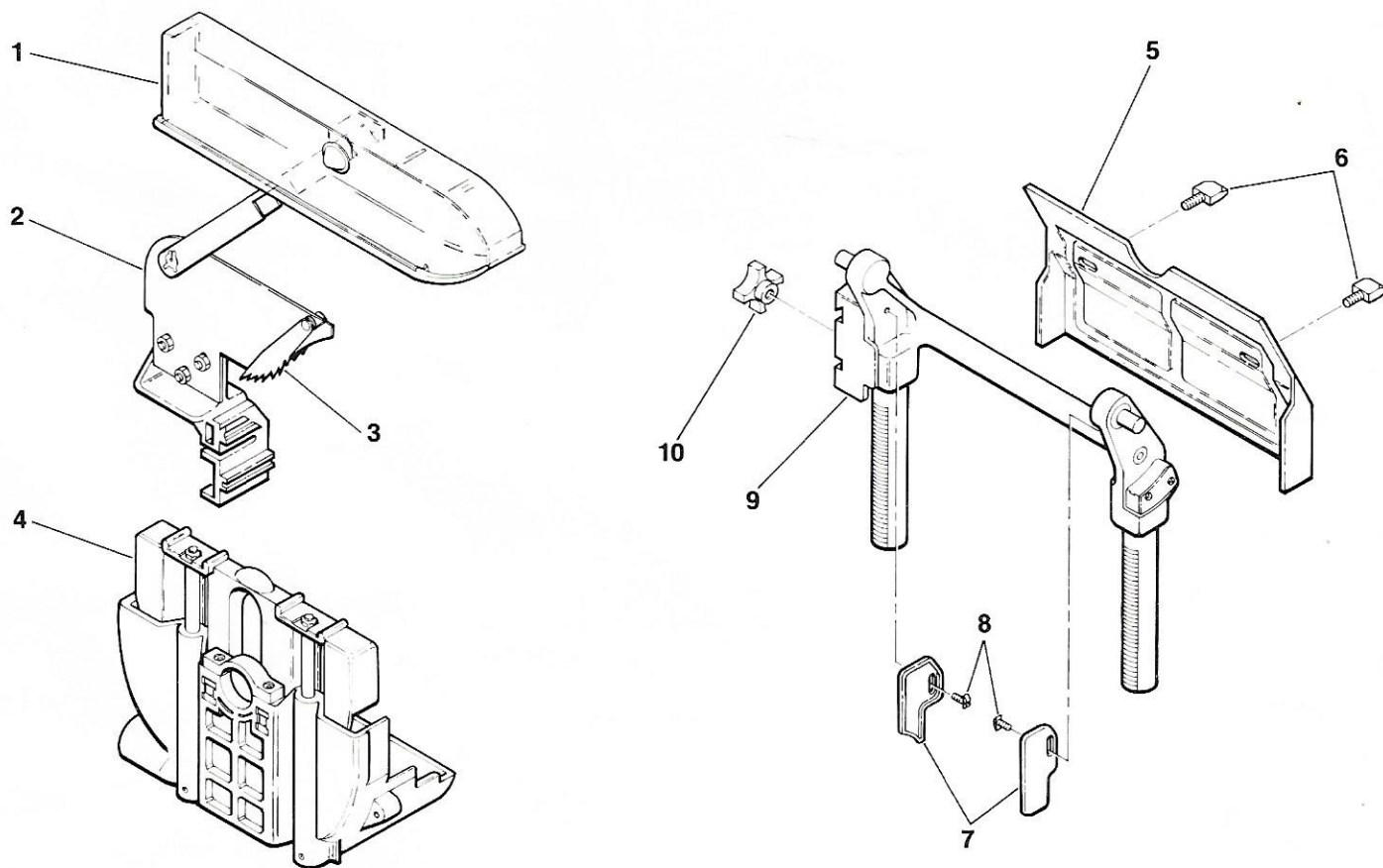


Saw Guard System

505875



Saw Guard System



Like your Mark V, the Shopsmith Saw Guard System is engineered to give you many years of reliable service with one purpose in mind—to enable you to produce your best woodworking possible—safely. With this in mind, remember that you should always use your saw guard system whenever possible during table saw operations.

To receive the full benefits from the system's features, carefully follow all assembly and operation instructions. Before we go any further, familiarize yourself with the various parts of the saw guard system.

1. Upper Saw Guard—Covers the blade and also allows you to see the cutline.

2. Splitter—Keeps the stock from pinching the blade.

3. Anti-Kickback Pawls—Prevent kickback accidents.

4. Lower Saw Guard—Covers the blade under the table and channels the dust for vacuum pickup.

5. Tie Bar Shield—Attaches to the tie bar to cover blade on right side under the table.

6. Thumbscrews—Attach the tie bar shield to the tie bar under the table.

7. Front and Rear Shields—Cover the front and back of the blade under the table and deflect dust back into lower guard.

8. Slotted Screws—Attach front and rear shields to tie bar.

9. Upper Guard Mounting Bracket—Attaches upper guard to the table which allows it to raise and lower with the table, adjusting for different thicknesses of stock.

10. Bracket Knob—Clamps upper guard to the mounting bracket.

Before installing the saw guard system, the Mark V table must be properly aligned according to the procedures described in the **Alignment and Adjustment** section of the Mark V Owner's Manual. After these adjustments are made, here's how to install your Mark V Saw Guard System:

1. Installing Lower Saw Guard

- Place the lower guard clamp over the Mark V quill. The clamp should fit against the collar of the quill. With the 5/32" Allen wrench, tighten each screw alternately (so as to exert equal pressure on both

Saw Guard System

screws of the lower guard clamp) until tight.

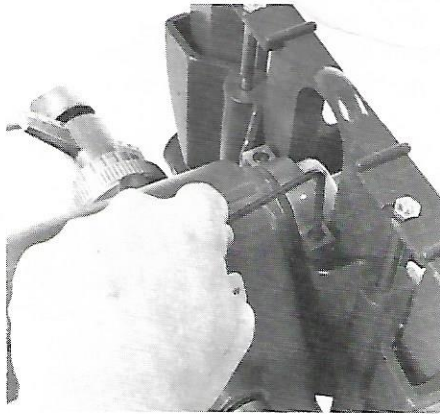


Figure 1. Remember to tighten screws alternately. Exerting unequal pressure on screws may damage the lower guard.

2. Installing the Tie Bar Shield

You'll need to remove the table from your Mark V for this step. Turn your table upside-down on your workbench.

- Locate the two screw holes on the outside of the tie bar and screw the two thumbscrews provided approximately five revolutions into the holes. Align the heads of the thumbscrews horizontally, and slip the tie bar shield into position. Tighten the thumbscrews securely.

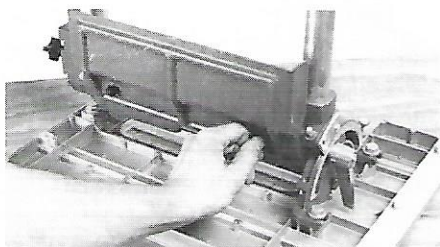


Figure 2. The tie bar shield will slip into position over thumbscrew heads. Be sure to tighten screws securely.

3. Installing Front and Rear Shields

- With the table still in the inverted position, locate the front shield screw hole (immediately in back of

the vernier scale) in the front of the tie bar. Using a medium blade screwdriver, turn the slotted screw in approximately eight revolutions. Align slotted screw head vertically with front shield screw hole and slip front shield into position. Tighten slotted screw. Repeat this procedure for the rear shield, located opposite the vernier scale.

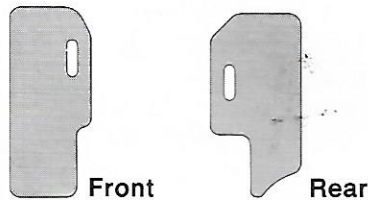


Figure 3. Be sure to install each shield in its proper position.

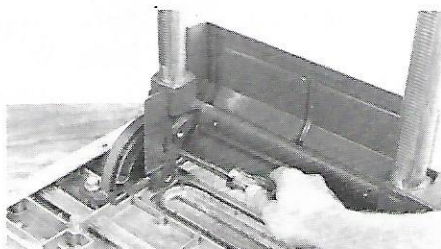


Figure 4. Front shield slips over slotted screw head. Tighten the slotted screw securely.

4. Installing the Upper Guard

- Install table on the Mark V. (Carriage should be slid 12"-18" away from headstock.) Remove the bracket knob taped to the upper guard mounting bracket and screw it onto the threaded shaft of the bracket approximately five revolutions.

- Align mounting ribs of the upper guard with the mounting slots of the upper guard mounting bracket. Slip upper guard into the mounting slots, positioning it over saw slot in table insert. **DO NOT** tighten bracket knob yet.

- Install saw blade on the quill. Make sure table is raised to its highest position. Slide the carriage

against the headstock and lower the table to its lowest position and lock it. (The blade should protrude approximately 3" above the saw table.)

5. Initial Alignment of Splitter

- To align splitter directly in line with saw blade, raise the upper guard out of the way. Lay a straight-edge (steel ruler, etc.) against the saw blade. Align splitter parallel to the blade and then tighten upper guard mounting knob securely.

WARNING: This alignment is critical, so complete this procedure carefully.

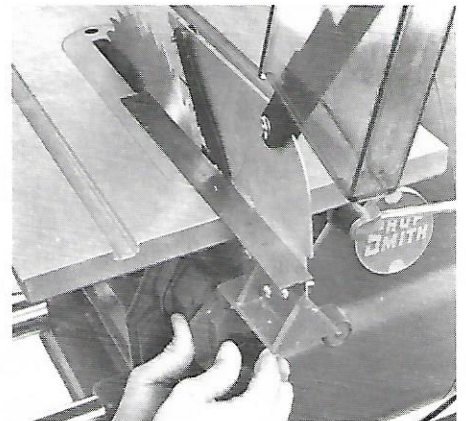


Figure 5. Splitter and saw blade must align properly, since your saw kerf must pass on either side of the splitter. This alignment is critical.

6. Making a Splitter Alignment Fixture

After making the initial splitter alignment, you'll want to make a fixture that automatically aligns your splitter perfectly every time. Our fixture has two advantages: it's accurate and quick. Here's the procedure:

- Cut a rectangular piece of 1/4" plywood 6" x 20". Then position the rip fence flush with one edge of the right miter gauge slot and lock the fence in place. Saw a 14"

Saw Guard System

long kerf in the plywood. **Turn off the machine, and after the blade stops, remove the plywood from the table saw.**

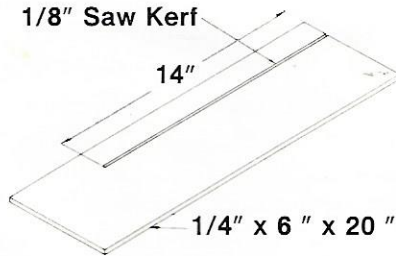


Figure 6. The dimensions of the splitter alignment fixture are 1/4" x 6" x 20". When making the cut, make sure the rip fence is aligned in its proper position.

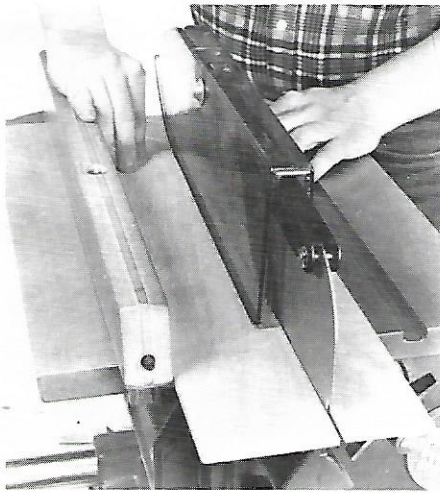


Figure 7. Making sure the rip fence is in the correct position, cut a 14" long kerf in the plywood. Turn off the machine, and after the blade has stopped, remove the board.

Whenever you need to reattach the upper saw guard, you can use this fixture to quickly align the splitter. Simply lock the fence in

position flush with the right miter gauge slot as you did to make the fixture. Slide the fixture onto the table so that the blade passes through the saw kerf, and the saw kerf holds the splitter directly in line with the saw blade. Tighten the upper guard mounting bracket knob and remove the fixture.

7. Using Your Saw Guard System

- Always use your saw guard system whenever possible during your table saw operations. The lower guard is used on all sawing operations, while the upper guard is used when you cut completely through the stock. Check the alignment of the guards during each table saw setup, and remember to use your guards whenever possible.
- Remember when changing table tilt, be sure to install the upper guard **first**; otherwise, after table tilt is set, the upper guard cannot be installed.
- When tilting table, be sure to extend the quill. Also align the splitter with the blade.
- When using the Mark V in the drill press mode, front and back shields must be removed.
- When using the Mark V in the horizontal boring mode, tie bar shield must be removed.
- The molder head or dado set must be mounted on a 5/8" arbor.
- After using either the molder head or dado set, be sure you raise the table to a height that **clears** not only the accessory, but also the lower guard before moving the table.
- A vacuum hose with a nozzle diameter of 1-1/4" can be connected to the lower guard to reduce sawdust buildup in your shop.

8. Caring for Your Shopsmith Saw Guard System

Your saw guard system will require minimum maintenance. There are, however, a few things you should do to keep your guards in top condition.

- Brush and blow the sawdust away that accumulates in the upper and lower guards.
- Using a good paste floor or furniture wax, wax and buff the splitter. **DO NOT** use car wax or furniture polish. Car wax forms a tough protective coat, but it doesn't lubricate. Furniture polish isn't tough enough. Waxing the splitter will make your workpiece slide much easier and keep the resin from sticking to the splitter.
- The anti-kickback pawls of the splitter should be kept sharp. The pawls prevent kickbacks—a common accident when misusing the table saw. Use a file to sharpen the pawls if they get dull.
- If the lower guard spring mechanism responds slowly, apply graphite to the rods. The graphite will lubricate the rods without attracting sawdust. Powdered graphite may be purchased at local hardware stores.

A Final Word . . .

Remember the lower guard is used on all table saw operations, while the upper guard is used when you cut completely through the stock. Check alignment of the guards during each setup, and use your guards whenever possible.



Shopsmith Inc.

The Home Workshop Company
750 Center Drive
Vandalia, Ohio 45377