

The “Under-the-Mark V” Cabinet Revised

This revision changes the depth dimension from the original plan and replaces the pullout shelves with 4 drawers of varying sizes. It also replaces the doors at the rear with a piece of pegboard.

This plywood cabinet is a perfect mate for the Mark V. It makes good use of the space underneath the machine, creating a surprising amount of storage space for tools and accessories. Those easy-to-misplace items such as arbors, molder knives, saw blades, and sanding discs can be stored ready-to-use right where you can reach them. Even larger Mark V accessories such as the jointer and belt sander can fit inside this cabinet.

By mounting the bandsaw and jigsaw on the ends of the Mark a couple of accessories on the top of the cabinet, and the rest on the inside of it, all the items in the Ultimate Shop Accessory Package, and the Mark V itself, can be stored in 12 square feet. That's about the size of a walk-in closet!

Cut the plywood according to the cutting diagram with the help of another person. Use plywood or carbide-tipped saw blade and a wooden fence extension for greater bearing surface and more control for straight cuts.

After all the pieces are cut, set up the dado package to cut all dados 1/2" wide by 1/8" deep for glides and assembly. For accuracy cut and sand the two contoured ends together. Then drill the mounting bolt holes in the ends and the clamp bars. Drill for door knob screws as well.

Dry assemble the cabinet using bar clamps and check the fit of doors and shelves. Mark for hinge mortises. Now disassemble the cabinet. Chisel the mortises for the hinges.

Re-clamp the cabinet parts together and fasten with screws only. Use no glue. Mount the door knobs, hinges, and latches to the doors.

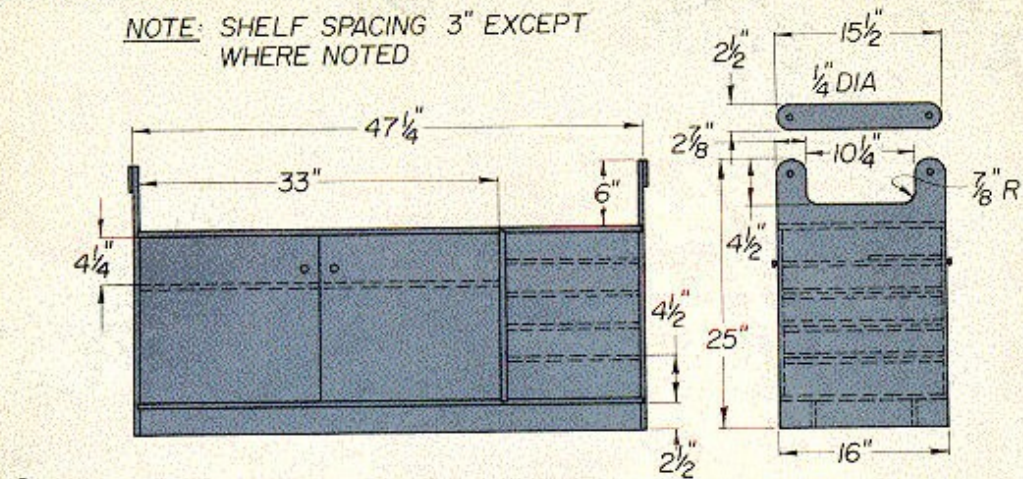
Mount the cabinet to the underside of the Mark V, fill it with accessories and tools arranged to suit your personal needs. After the cabinet is full, final fit the doors in place. Then take all the parts out of the cabinet one last time, disassemble it and apply glue to all joints, reusing the utility screws again to clamp it while the glue sets. Then you can fill the screw head countersinks with wood putty and apply the finish of your choice.

This cabinet can be modified to roll on casters to be used as a low-level work surface.

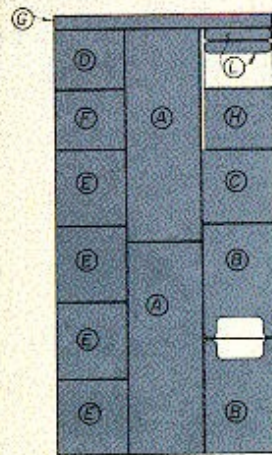
Under MARK V Storage

"Under the Mark V" Cabinet, cont.

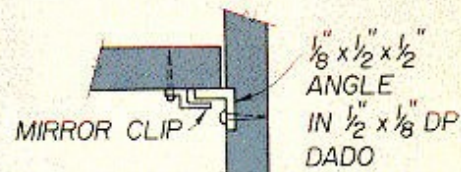
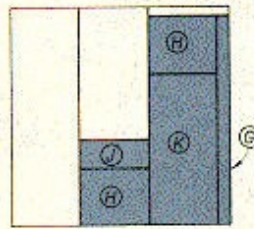
NOTE: SHELF SPACING 3" EXCEPT WHERE NOTED



CABINET LAYOUT



CUTTING LAYOUT



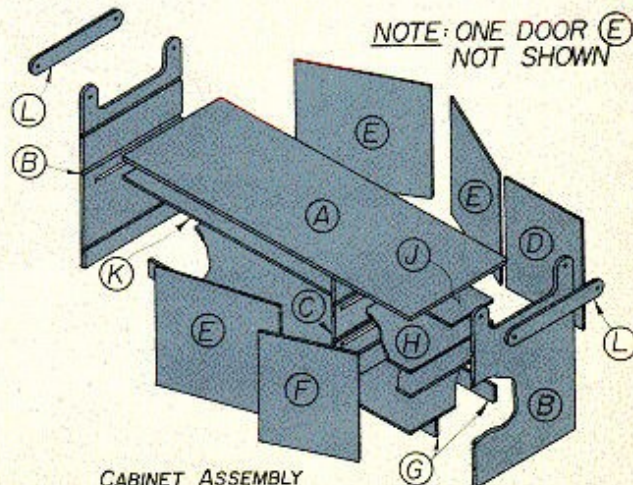
SHELF MOUNTING DETAIL

Bill of Materials (finished dimensions in inches)

A Top and Bottom (2)	1/2 x 16 x 46-1/2
B Ends (2)	1/2 x 16 x 25
C Partition	1/2 x 16 x 15-3/4
D Back	1/2 x 15-1/2 x 12-3/4
E Doors (4)	1/2 x 15-1/2 x 16-1/2
F Door	1/2 x 15-1/2 x 12-3/4
G Braces (2)	1/2 x 2-1/2 x 46-1/4
H Shelves (3)	1/2 x 14-1/2 x 12-3/4
J Shelf	1/2 x 12-3/4 x 7-3/4
K Shelf	1/2 x 14-1/2 x 33
L Clamp bars (2)	1/2 x 2-1/2 x 15-1/2

Hardware

- 10 3" T-hinges with screws
- 13 1/8" x 1/2" x 1/2" Aluminum angle
- 30 #8 x 1/2" Panhead sheet metal screws
- 5 Knobs
- 42 #6 x 1-1/2" Utility screws
- 12 "Mirror" retainer clips



CABINET ASSEMBLY

NOTES on Measurements:

SS Rails – Top 23 ½” ; Center 22 ½” ; Diameter 1 ¾”
Sanding Discs - Regular 12” dia x 2 1/8” deep ; Conical 12” dia x 3” deep
Rip Fence 30” l x 6 ¼” h
Miter 18” l

Bill of Materials (Revised for 2” narrower cabinet) (finished dimension in inches)

Part	Qty	Description	Measurement
A	2	Top and Bottom	½ x 14 x 46
B	2	Ends	½ x 14 x 25
C	1	Partition	½ x 13 ¾ x 17 ½
D	1	Back	½ x 18 x 46 5/8
E	2	Doors	½ x 15 13/32 x 17
F	1	Door	½ x 15 ½ x 12 ¾
G	2	Braces	½ x 1 ½ x 46 ¼
H	4	Drawers	h* x 14 7/16 x 14
J	1	Shelf	½ x 12 ¾ x 7 ¾
K	1	Shelf	½ x 13 ½ x 31 1/8
L	2	Clamp bars	½ x 2 ½ x 13 ½

Note: h* = height of drawer – 7”, 4”, and two 3”

Hardware

- 4 3” Hinges with screws
- 2 Knobs
- 4 Drawer Pulls
- 8 12” Hardwood runners for drawers
- 42 #6 x 1 ½” Utility screws

Make cabinet only 14” instead of 16” deep to keep from hitting the table supports when lowering the table. Also use ¼” pegboard on the rear (Item D).

Lower the single long shelf to accommodate the rip fence (6 ¼” height).

Eliminate the rear doors and one front door (2 Items E & F); add a back made of pegboard.

Shelves are replaced with drawers - from bottom up, one 7”, one 4”, and two 3”.

Lumber

- 1 – ½” x 4’ x 8’ birch plywood
 - a) Rip 3 ¾” x 4’
 - b) Rip 2 pcs 14” x length
- 1 – ¼” x 2’ x 4’ luan plywood
- 1 – ¼” x 16 ½” x 47 ¾” Pegboard (2’ x 4’)